

# The using document instructions of Device Manage

## 1. Installation steps:

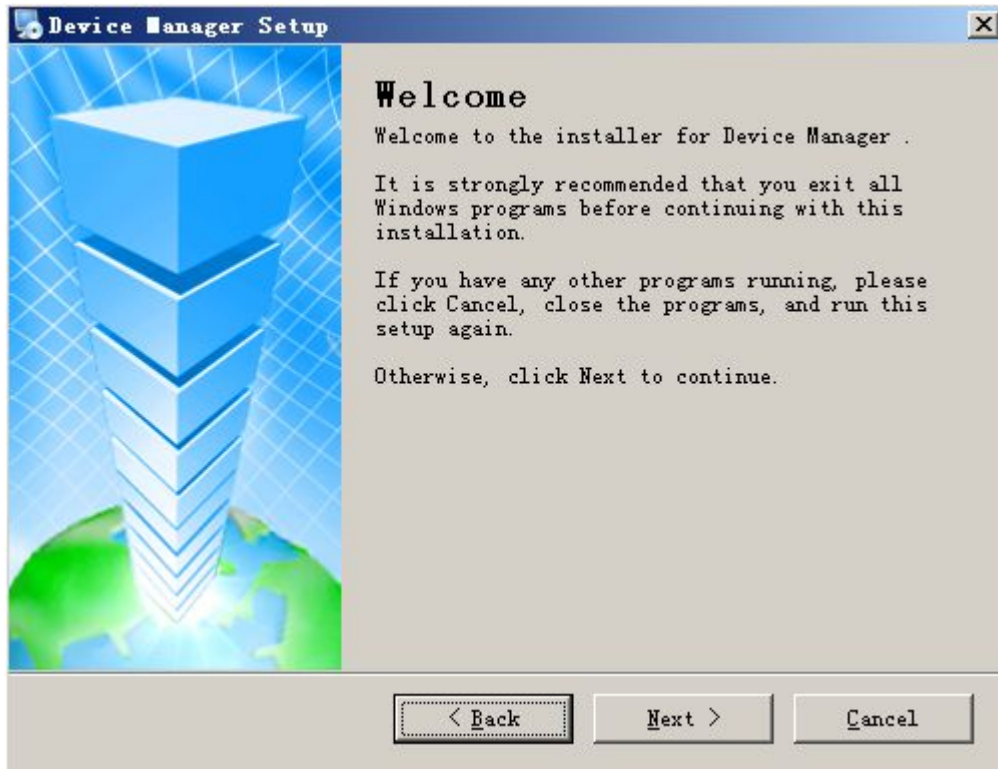


General\_DeviceManage  
\_V2.5.0.6.R.20140305  
.exe

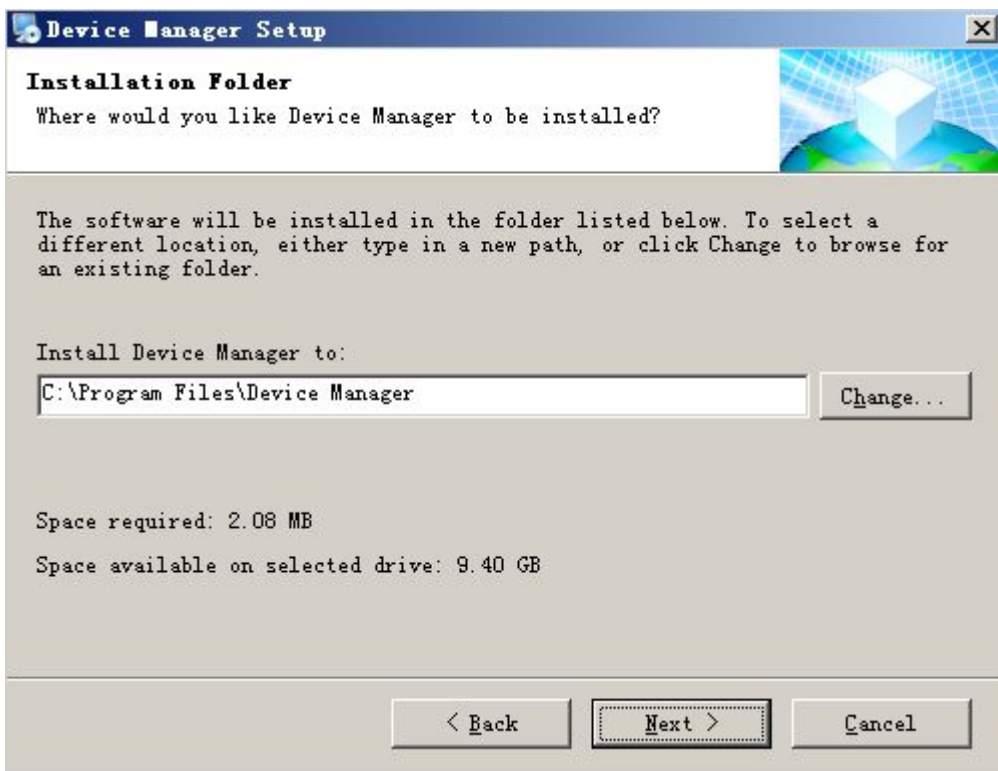
- 1) Find in the disc and double-click `General_DeviceManage_V2.5.0.6.R.20140305.exe` file, pop up the dialog box shown in the diagram below.



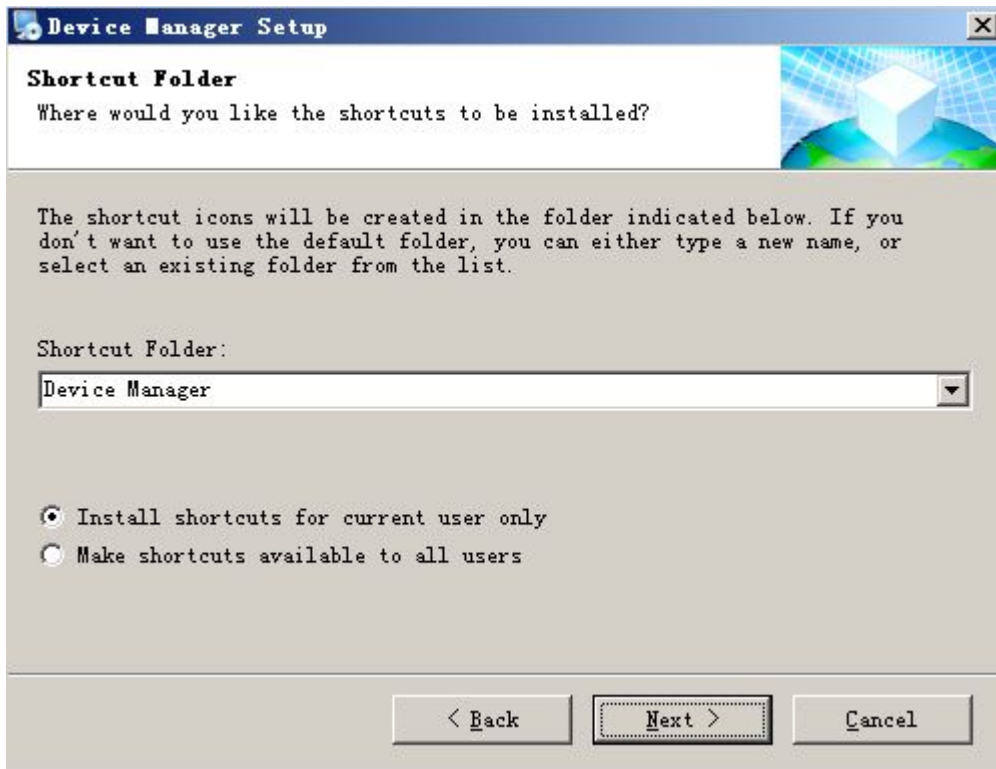
- 2) Click "next", pop up the dialog box shown in the diagram below.



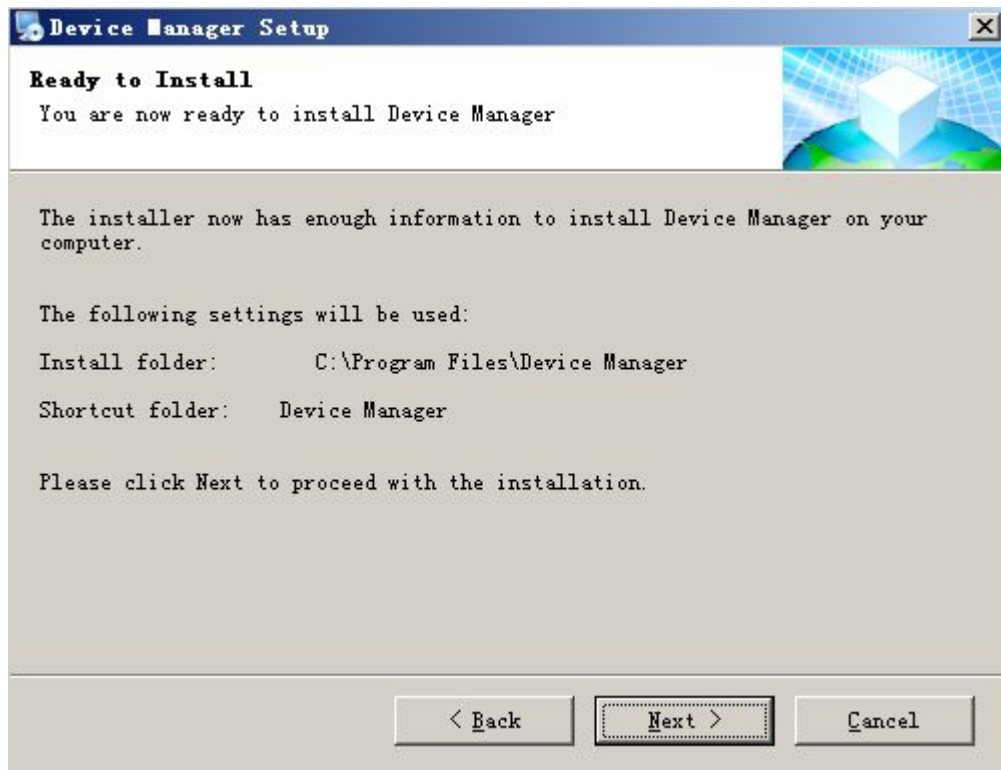
3) Click "next", pop up the dialog box shown in the diagram below.



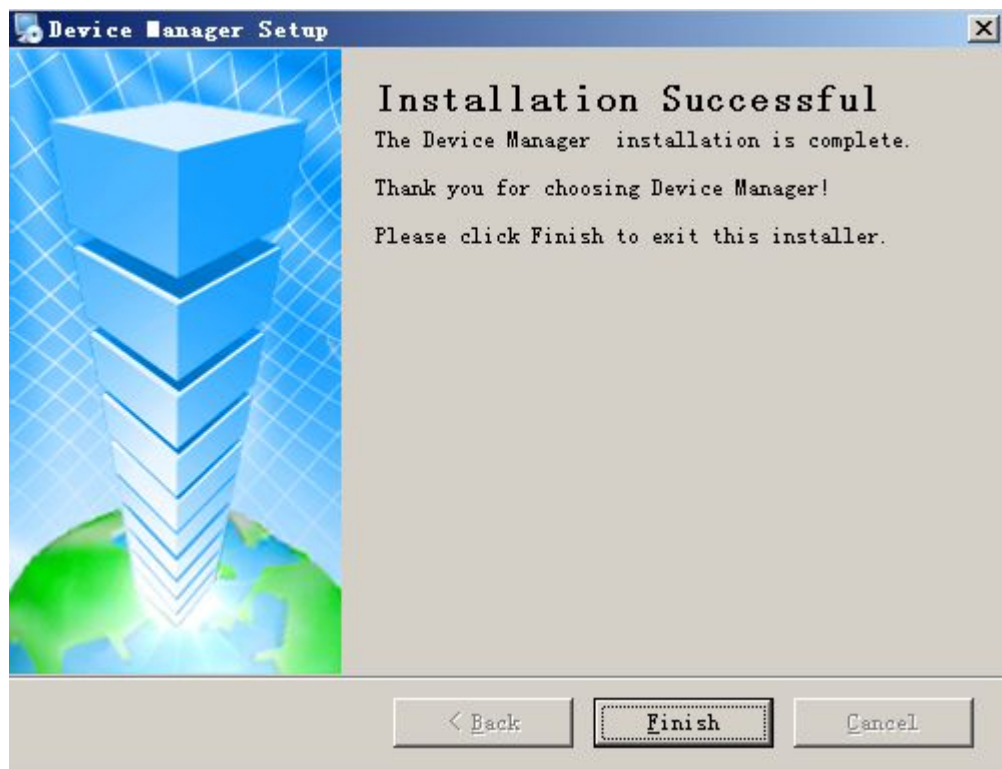
4) Press the "change" button, , select the installation pat, the system default folder is "C:\Program Files\Device Manager", Click "next", pop up the dialog box shown in the diagram below.



- 5) Input the user message, click “next”, start to install Player, pop up the dialog box shown in the diagram below.



- 6) Click “next”, pop up the dialog box shown in the diagram below.

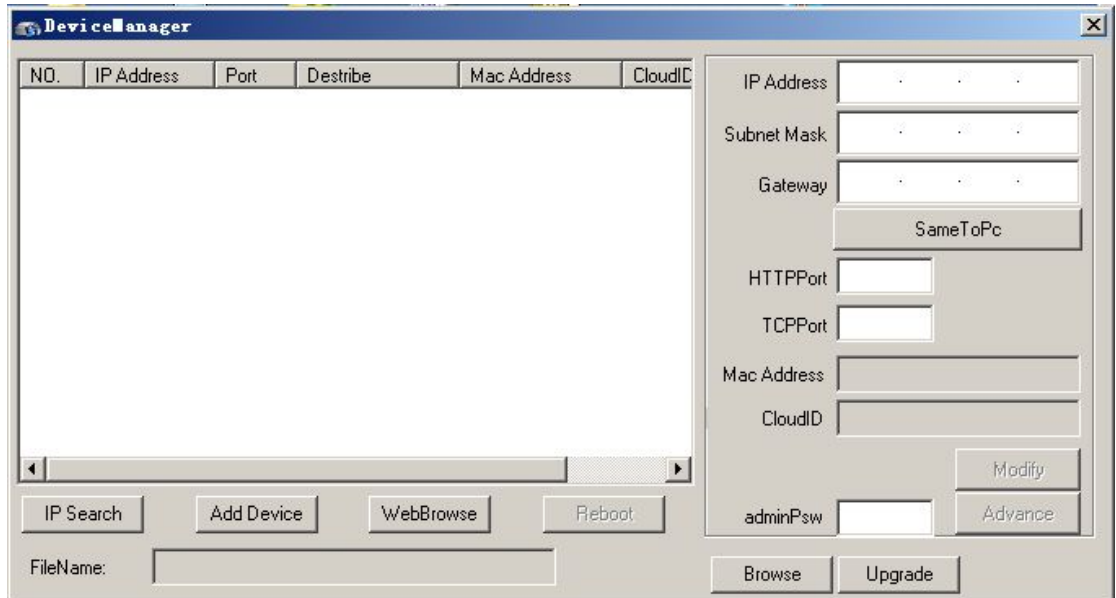


- 7) Click “finish” button to complete the installation. At this moment, the desktop will appear the

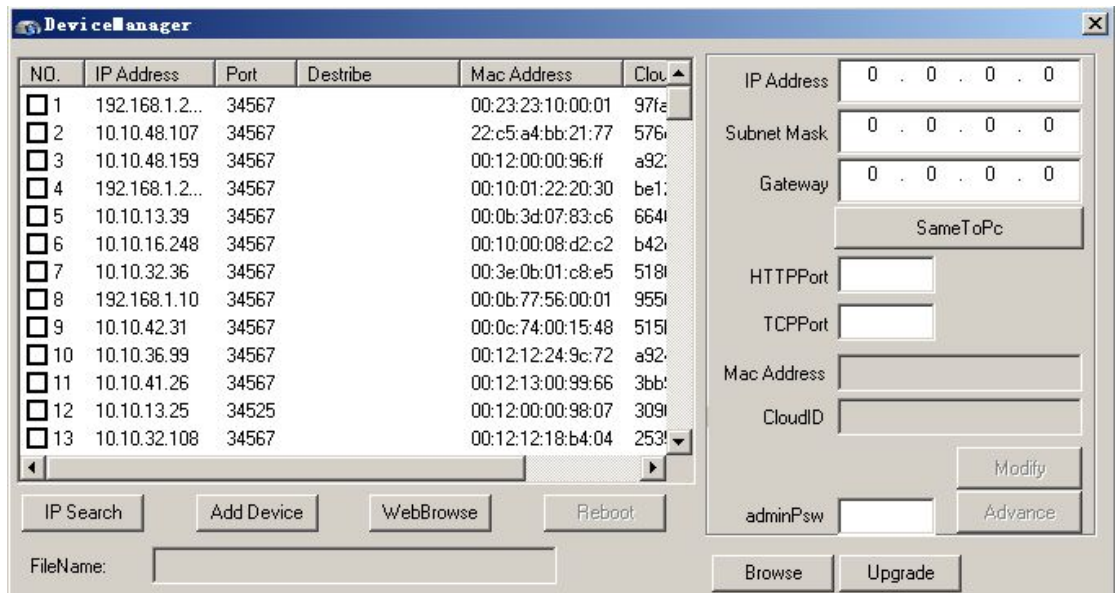
following icon



2. Device Manager interface is as follows:



1) Search device



2) Modify the network parameters: select a device, in the action bar on the right can modify the network parameters of the IP address, subnet mask, default gateway, HTTP port, TCP port, then the network parameters of the device modified successfully; click

on the “consistent with the local PC” can make the subnet mask and default gateway fit to the PC.

A screenshot of a network configuration form. The fields are as follows:

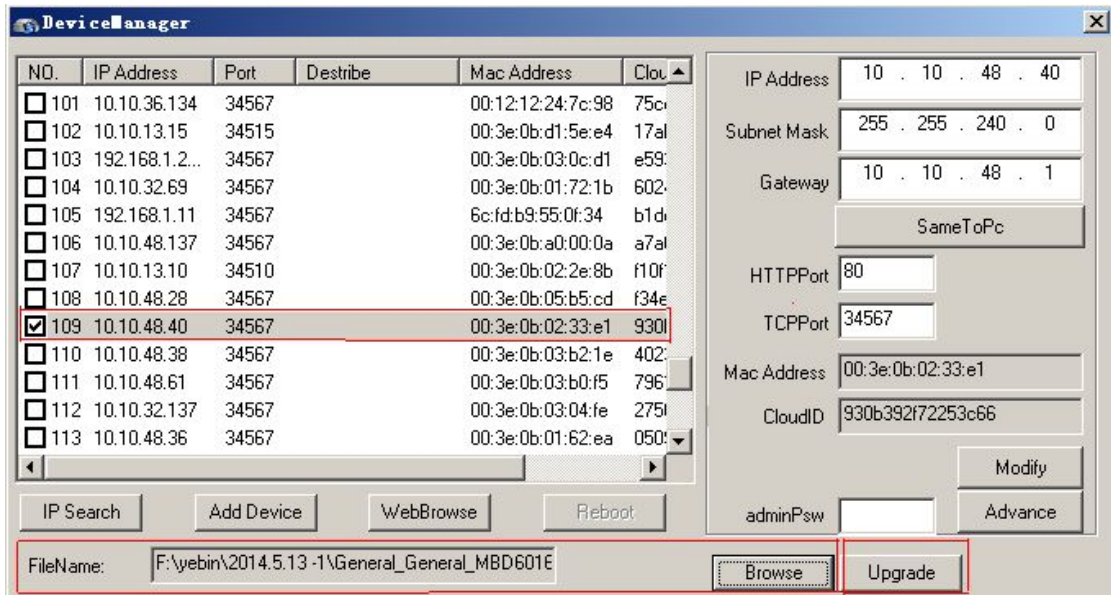
|             |                     |
|-------------|---------------------|
| IP Address  | 10 . 10 . 47 . 45   |
| Subnet Mask | 255 . 255 . 240 . 0 |
| Gateway     | 10 . 10 . 32 . 1    |
|             | SameToPc            |
| HTTPPort    | 80                  |
| TCPPort     | 34567               |
| Mac Address | 00:0b:3d:87:ab:01   |
| CloudID     | 8bb76c2d0c4b9394    |
|             | Modify              |
| adminPsw    |                     |
|             | Advance             |

3) Advanced; configure the DNS, mobile phone monitoring enabled, DDNS, WIFI, etc.

A screenshot of an "Advance" configuration window. The settings are as follows:

|            |                                     |           |
|------------|-------------------------------------|-----------|
| DNS1       | 202 . 101 . 172 . 37                |           |
| DNS2       | 202 . 101 . 173 . 157               | SameToPc  |
| PhoneInfo  |                                     |           |
| Enable     | <input checked="" type="checkbox"/> |           |
| Port       | 34599                               |           |
| DDNS       |                                     |           |
| DDNSType   | CN99                                | Regisiter |
| Enable     | <input type="checkbox"/>            |           |
| DomainName | your.3322.org                       |           |
| DDNSName   |                                     |           |
| Passwd     |                                     |           |
| Wifi       | Setting                             |           |
|            | Save                                | Cancel    |

4) Device upgrade firmware: select the device needs to upgrade, click the “browse” button (generally the suffix for upgrade firmware is ) select the firmware needs to upgrade, click the “upgrade” button.



5) Other interface button

Add device: input the IP address, port, user name and password of the device can add device manually.

Web access: select the corresponding device, click on the web access, can access to the device directly through IE.

Restart device: select the device needs to restart, click on the restart device button, the corresponding device is started.

: