

IPC Fast Operation User Manual

Directory

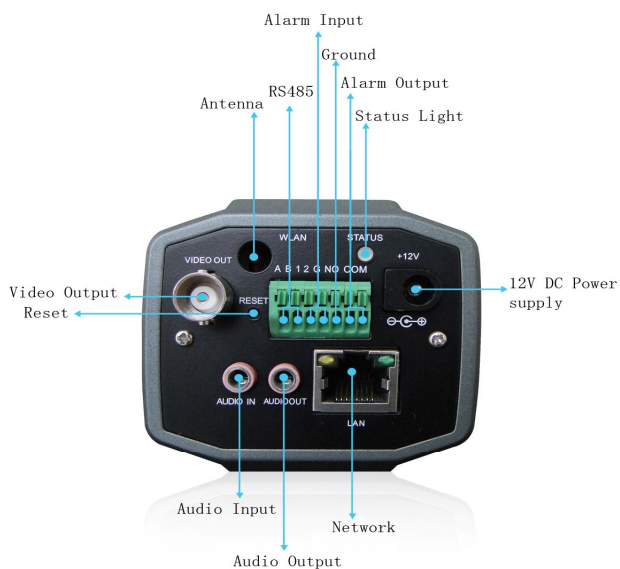
1. Interface introduction.....	3
1.1 Box IP Camera(IPC-XXXX-E series) interface.....	3
1.2 Waterproof(B cable) interface.....	4
1.3 Waterproof(P cable) Interface	5
1.4 Robot IP camera Interface.....	5
1.5 Cube IP Camera Interface	6
1.6 Interface Function Instruction.....	7
2. Network Operation.....	8
2.1 IE Operation	8
2.2 Client Software Operation	12
2.3 Monitor the device by WAN(cloud server)	15
2.4 HVR user manual	21
3. POE Power supply	24
4. Mobile monitor.....	26
5. Common Questions.....	38

Features:

1. Reliability and compatibility
2. Advanced H.264 High profile compression
3. Low streams and high resolution image
4. Support local BNC output
5. Support several servers, IP address,DDNS,cloud
6. Support two-way audio
7. Support dual stream,cloud technology.
8. Support iPhone,Windows Mobile,BlackBerry,Symbian, Android remote monitor.
9. Support all kinds of browsers, IE, Chrome,Firefox and Safari
10. Support WIFI/3G
11. Support connect to HVR/NVR
12. Support ONVIF2.0,please refer to IP camera user manual in the CD

1. Interface introduction

1.1 Box IP Camera(IPC-XXXX-E series) interface



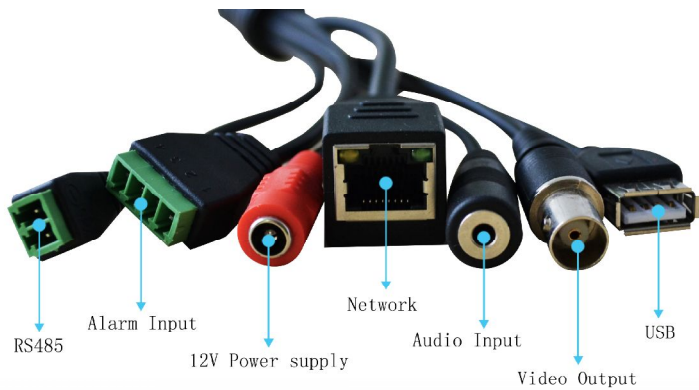
Picture 1.1 HD Box IP camera

1.2 Water proof (B cable) interface



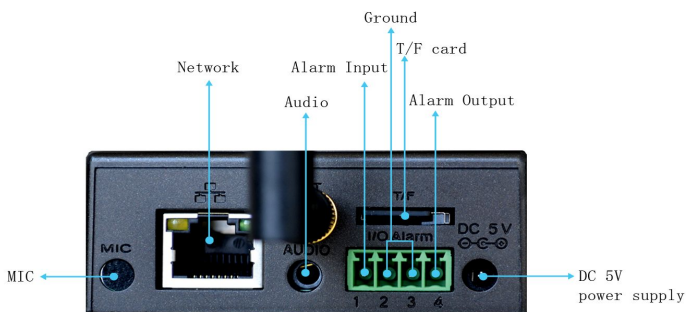
Picture 1.2 IR Waterproof IP Camera

1.3Water proof (Pcable) Interface



Picture1.3 IR Waterproof IP Camera

1.4 Robot IP camera Interfa



Picture 1.4 Robot IP camera

1.5 Cube IP Camera Interface



Picture 1.5 Cube IP Camera

1.6 Interface Function Instruction

DC12/5V Power Supply: 12/5V DC power supply, wrong power supply will make the device broken

Indication Light: It's working status of device, when power on is red, finish startup is green, local record is green flicker, alarm activated is red flicker

Alarm Input: Default - Normal open

Alarm Output: Use for alarm activated

RS485: Connected with PTZ or other RS485 devices

RESET: Keep pressing 5seconds to restore to factory setting, include IP setting

Audio Input: Connected to audio picker

Audio Output: Connect to Speaker

Video Output: Connect to TV for debugging focal length

Antenna: Use for WIFI/3G

2. Network Operation

2.1 IE Operation

2.1.1 Use correct power supply

2.1.2 After startup, connect the device with switch or router, see below picture



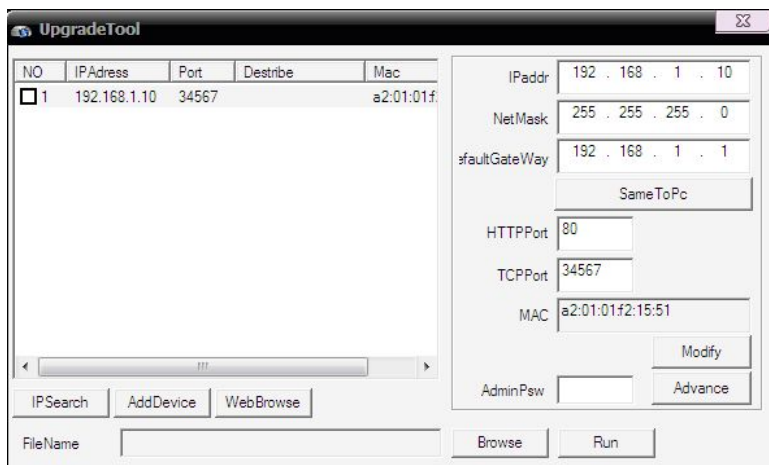
Picture2.1 Network structure

2.1.3 Make sure the device ip address is in the same LAN of router, default IP address is 192.168.1.10

2.1.4 Go to CD->English->Software to find UpgradeTool and install it

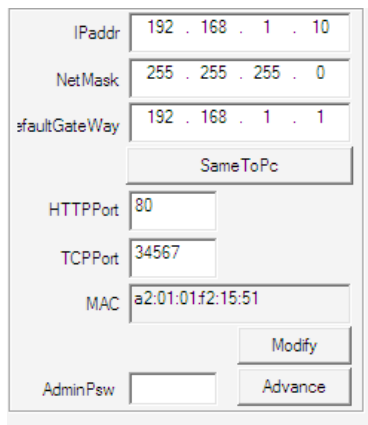
2.1.5 Run UpgradeTool, Click "IP Search",you will find the device ip,see below

picture



Picture2.2 IP Configure

2.1.6 Select the device to config IP, see below picture



Picture2.3 IP Configure

2.1.7 Factory default IP setting:

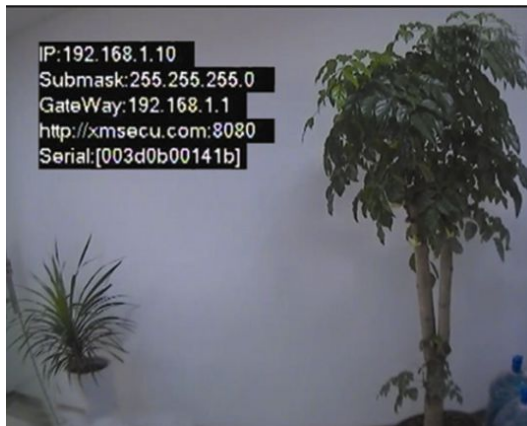
IP address: 192.168.1.10

Subnet Mask: 255.255.255.0

Gateway: 192.168.1.1

User name: admin

Password: no password

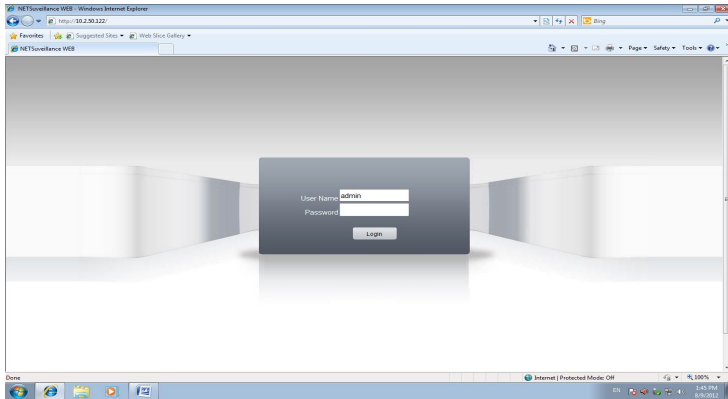


Picture 2.4 Local BNC output

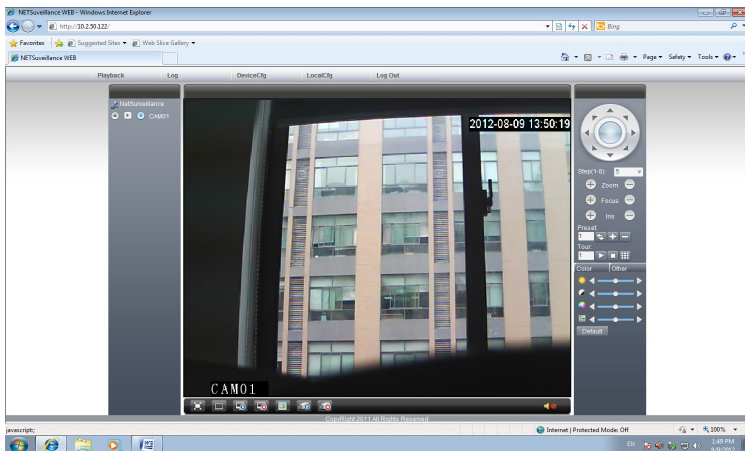
Note: Local BNC output is for debugging lens and look over IP settings(only keep

30seconds ,then disappear), see above picture

2.1.8 Open IE,type IP address,login with user name and password,see below picture



Picture 2.5 WEB GUI After login,enter into below picture

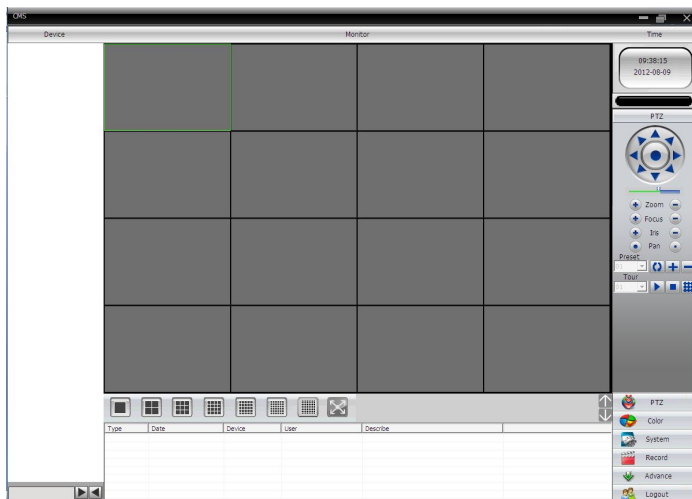


Picture2.6 WEB GUI after login

2.2 Client Software Operation

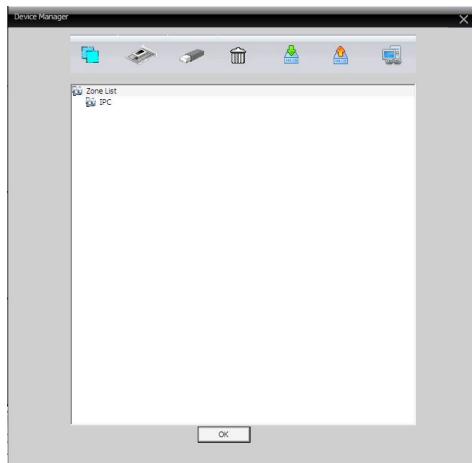
2.2.1 Go to CD->English->Software, find CMS

2.2.2 Install CMS, run it, default user name: super, no password



Picture 2.7 CMS Interface

2.2.3 Device manage: System->Device manage,see below picture



Picture2.8 Device manage

2.2.4 Add Device, see below picture

The screenshot shows an 'Edit' window for adding a device. It contains the following fields and controls:

- A table with headers: NO., IP Address, Port, MAC.
- Buttons: IP Search, Add Device, EditDevice.
- Device Name: Text field with value 'Test'.
- LoginType: Radio buttons for ☒ IP Address, ☐ Domain, ☐ Serial ID.
- IP Address: Text field with value '192.168.1.1'.
- Port: Text field with value '34567'.
- User Name: Text field with value 'admin'.
- Password: Text field.
- Zone: Text field with value 'IPC'.
- Vendor: Dropdown menu with value 'H264DVR'.
- Buttons: OK, Cancel.

Picture 2.9 Add device

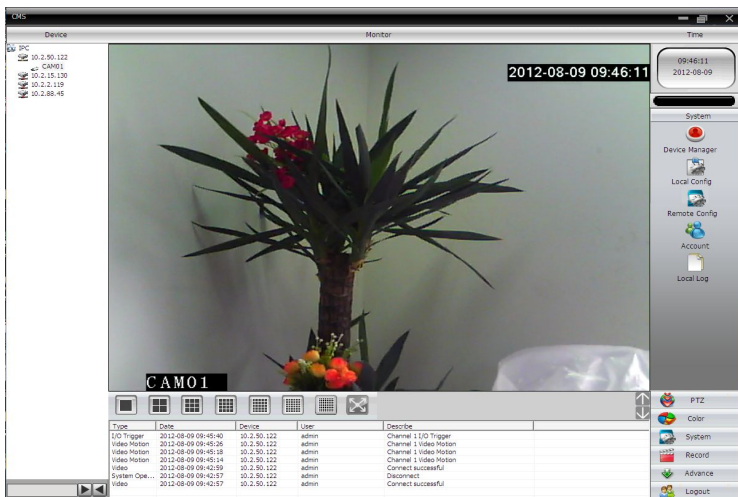
add device modes: IP address, domain name,serial number and MAC address.

Add IP address ---- IP search and manually add IP address

IP search: Click "IP search" and select the DVR IP address to add device

Manually add IP address: Click "add device",then fill with IP address,TCP port,user name, password

2.2.5 Device connection: double click the device name,then choose main stream or extra stream, see below picture



Picture 2.10 Connect device successfully

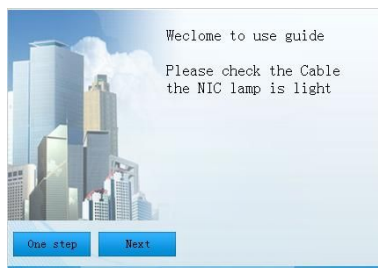
2.3 Monitor the device by WAN(cloud server)

2.3.1 If this is the first time for you to visit it,pls read it

- (1) Login XM Cloud <http://xmeye.net>



- (2) User guide,see below picture.



- (3) Click "Next", then search IP address, see below picture:

IP Address	Port	Mac
10.2.3.88	34567	82:c1:35:91:5e:eb
10.2.5.128	34567	00:0b:3f:00:00:01
10.2.4.131	34567	00:10:00:00:00:2e
10.2.25.96	34567	00:02:90:78:98:58
10.2.18.54	34567	00:21:22:23:54:54
10.2.5.19	34567	00:10:00:00:00:a3
10.2.55.27	34567	00:87:04:03:42:1a
10.2.88.46	34567	00:22:33:56:74:30
10.2.52.49	34567	00:00:46:34:45:66
10.2.54.49	34567	00:00:46:34:45:66
10.2.2.119	34567	00:14:25:36:47:58
10.2.111.114	34567	10:22:55:54:43:32
10.2.6.43	34567	32:12:43:34:56:ab
10.2.4.54	34567	00:0b:3d:70:86:94

(4) Click "Next", see below picture

Netcomm config

IP Address 10 . 2 . 3 . 88

NetMask 255 . 255 . 0 . 0

GateWay 10 . 2 . 0 . 1

SameToPc (Recommend)

One step Next

(5) Click "Next", see below picture.

Dns config

DNS1 202 . 101 . 172 . 35

DNS2 202 . 101 . 172 . 35

SameToPc (Recommend)

One step Next

(6) Click "Next", enter to user registration page, see below picture.

Please regist a user

☐ Has registered

UserName

Password

Confirm

Email to find password

(7) Click "Next", it's shown device serial number and another name,see below picture.

Please input a devicename

DeviceSn

DeviceName

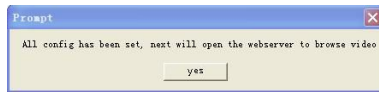
(8) Click "Next", it's shown registration finished page, see below picture.

Complete all config

Please Remember the user:
haol3

Can user below network
www.xmeye.net
..

(9) Click "Finish", see below picture.

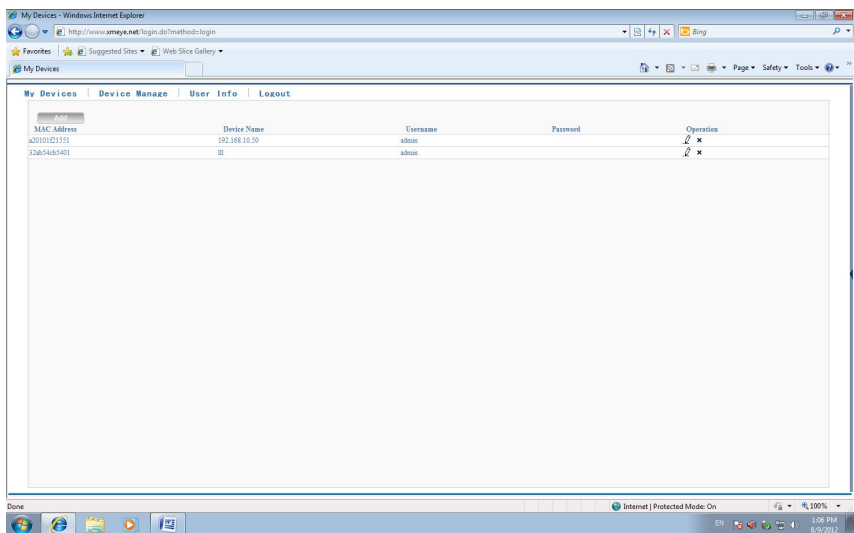


2.3.2 Login by User, device manage(you can manage multiple devices if login by user).

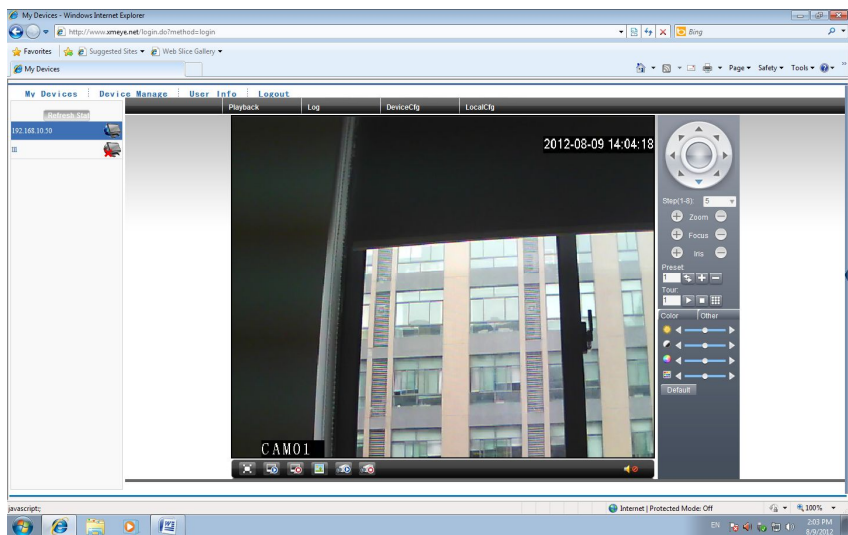
(1) Login <http://xmeye.net> , click "By User", input user name and password



(2) After login, click "Device manage" -> "Add device",see below picture

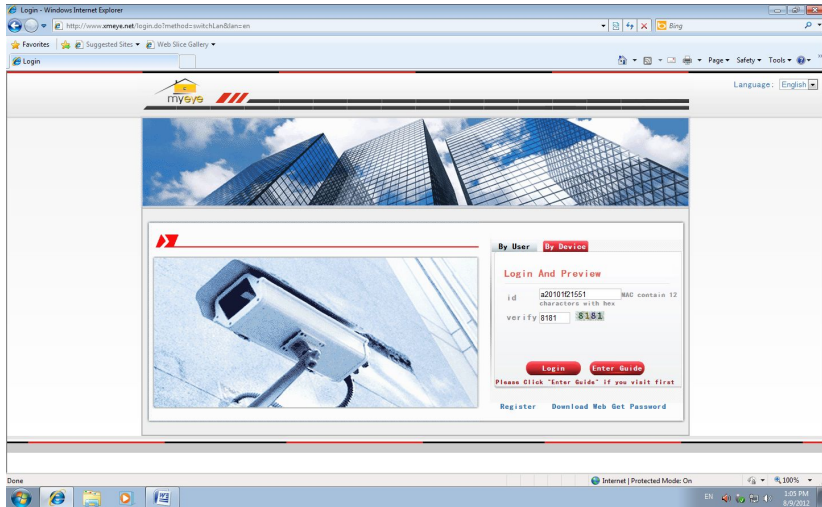


(3) Enter "My device", double click device name, then you can monitor the device, see below picture

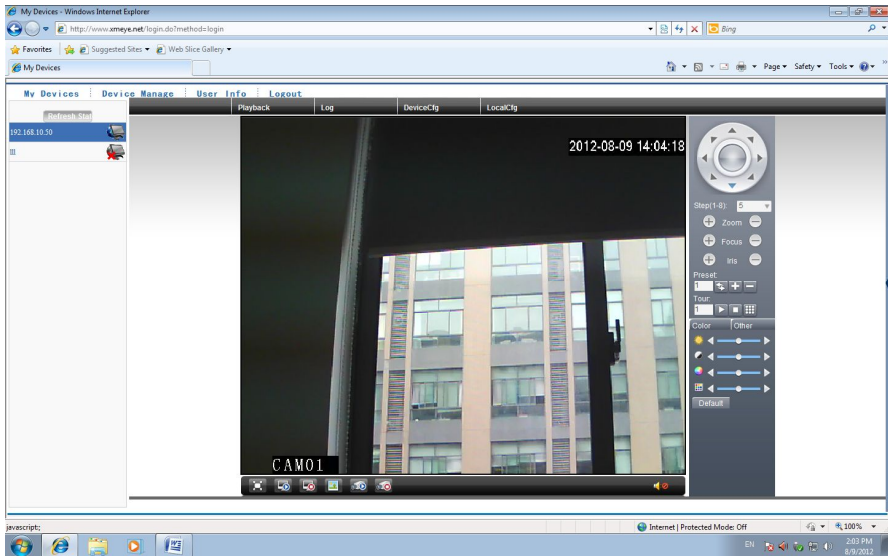


2.3.3 Login by device and device manage

(1) Go to <http://xmeye.net> ,click "By Device", fill with serial number and verify number.



(2) Ento into monitor live, see below picture

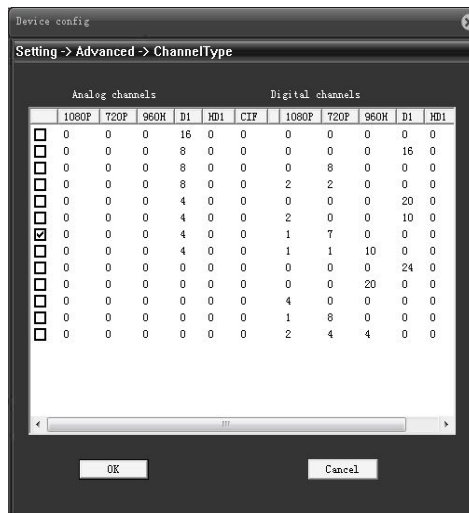


2.4 HVR user manual

2.4.1 Login HVR

2.4.2 GotoMainMenu->System->DigitalManage->ChannelType, see below picture

Select different HVR mode, picture 3.1 shows "4ch analog D1 + 1ch 1080p IP + 7ch 720p IP".



Picture 3.1 ChannelType

If you connect a IP device, resolution or encode range is higher than HVR mode distribute, it will show nothing on screen, see below picture



Picture 3.2 IP device resolution higher than HVR mode

2.4.3 MainMenu->System->DigitalManage->DigitalChannels, click left corner button to add device ---- manual add and search IP address.

(1) Add IP camera to HVR, pls refer to client software user manual, see below

picture:

Remote channel

Configuratio: chConfig2

Device Type: IPC Protocol: TCP

Remote: 1 Stream: Main Stre:

IP Address: 10.2.23.122

Port: 34567

User Name: admin Password:

Search

NO.	Device Name	MAC	IP Address	Port
18	LocalHost	1e:59:03...	192.168...	34567
19	LocalHost	00:44:00...	10.2.6.57	34567
20	LocalHost	00:00:46...	10.2.52.49	34567
21	LocalHost	00:10:00...	10.2.5.19	34567
22	LocalHost	00:0b:3d...	10.2.4.54	34567
23	LocalHost	00:23:65...	10.2.88.132	34567
24	LocalHost	00:3e:0b...	10.2.23.122	34567
25	LocalHost	00:3e:0b...	192.168.1.8	34561
26	LocalHost	00:10:00...	10.2.4.131	34567
27	LocalHost	00:0b:3f...	10.2.9.38	34567
28	LocalHost	00:02:90...	10.2.25.96	34567
29	LocalHost	00:01:01...	100.168...	24561

OK Cancel

Picture 3.3 Add device

Device name: HVR channel name

Device type: Optional, IP Camera or DVR

Protocol: default TCP

Remote channel: remote DVR channel number, if IP camera, choose 1

Stream: choose "main stream" or "extra stream" for remote channels

IP address: remote DVR/IP camera ip address, manual add or search IP

Port: DVR/IP camera TCP port

User name and password: remote DVR/IP camera user name and password

(2) Finish add device

2.4.4 Delete remote channel

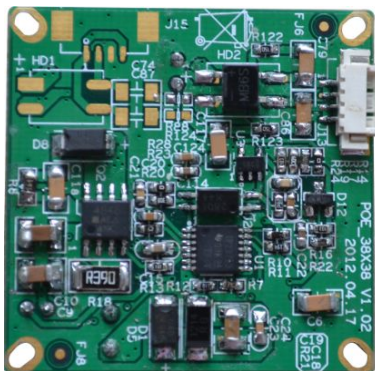
GotoMainMenu->System->DigitalManage->DigitalChannel, select IP address, click "delete".

2.4.5 Check "Channel Status"

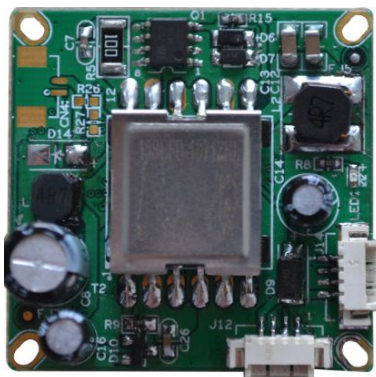
Mainmenu->System->DigitalManage->ChannelStatus, go to check channel status

3. POE Power supply

POE board, see below picture

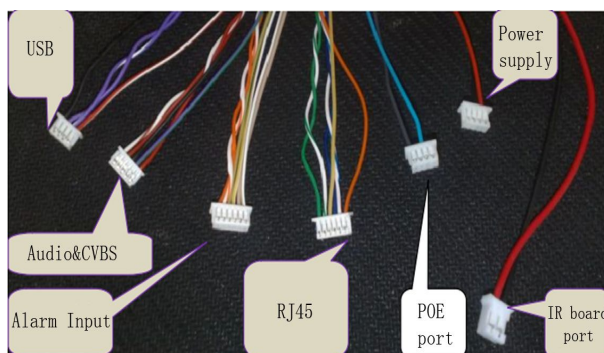


Picture3.1POEPositivepowersupplyboard



Picture 3.2 POE Power supply board back

POE extend cable, see below picture



Picture 4.4: POE extend cable port

4. Mobile monitor

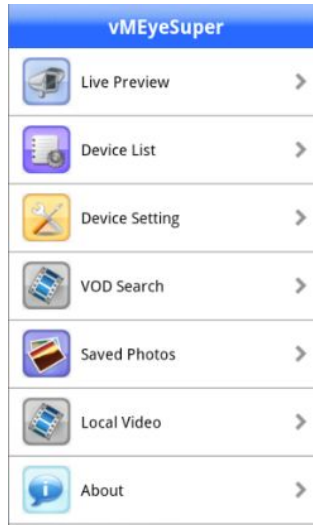
Install new mobile client software, after installation, see below picture



Picture 1 Mobile client software

4.1.1

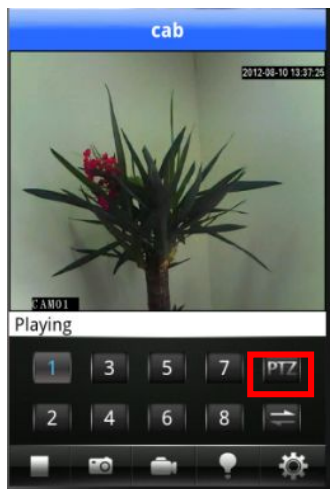
un mobile client software,see below picture:

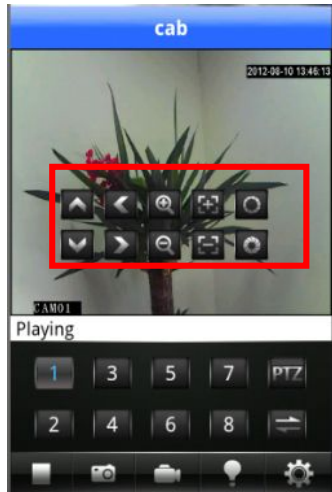


Picture 2 Mobile phone monitoring software functions







4.1.2






: Monitor, see below picture





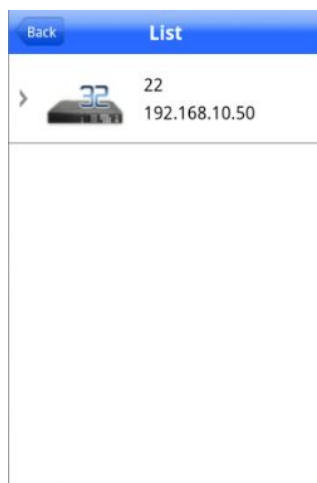
Picture 3 Mobile live monitor screen, double click the channel to full scButton function:

Button	Name	Function description
	Play	Connect the device and play live video
	Snapshot	Capture live pictures
	Local Record	Live record and save to your mobile
	Alarm	When motion detect,video loss,video blind happens, it will light, click here, it will show alarm message.
	Config	Config DVR/IP camera ip address,domain name, port,user name,password etc...
	PTZ	PTZ control

	witch channels	Switch to 8-32channels
	PTZ Control	Up,Down,Left,Right
	Zoom	Zoom in/out
	Focal	Focal add/reduce
	Iris	Iris add/reduce

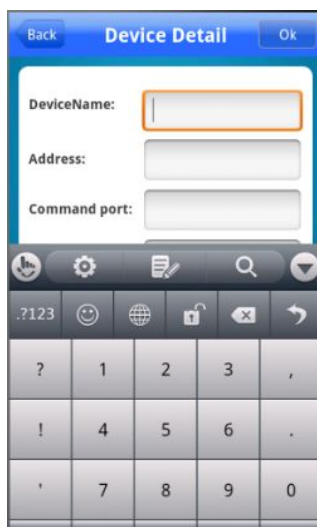
4.1.3

: Device list: see below picture




Picture 4 Device list

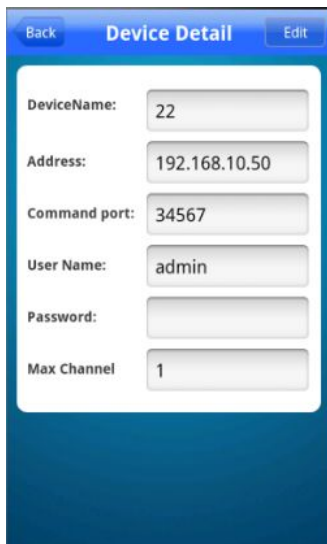
4.1.4 : Add device: see below picture



Picture 5 Add device

Input Device name, ip address/domain name, port, user name, password, then click  to finish


4.1.5 : Edit device: see below picture

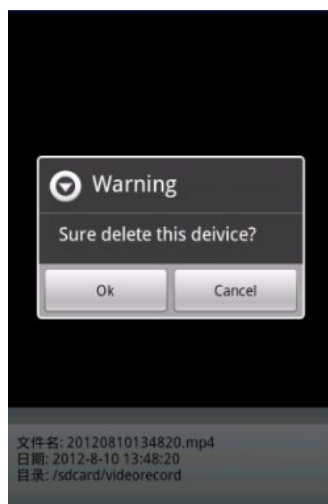


The screenshot shows a mobile application interface titled "Device Detail". It has a blue header bar with "Back" and "Edit" buttons. Below the header is a white form with the following fields:

DeviceName:	22
Address:	192.168.10.50
Command port:	34567
User Name:	admin
Password:	
Max Channel	1

Picture 6 Edit device IP setting

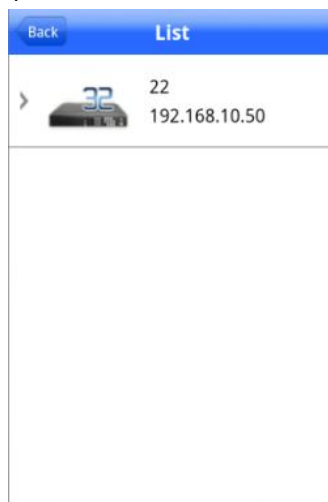
4.1.6 : Delete device: see below picture



Picture 7 Delete device

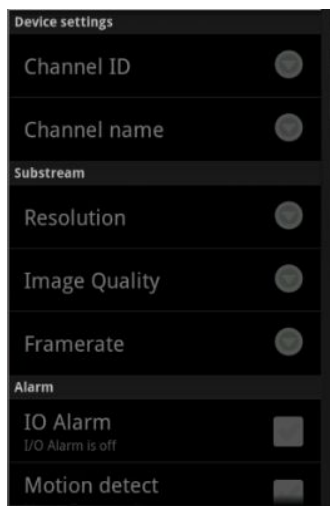
4.1.7

: Config device: see below picture



Picture 8 Config device

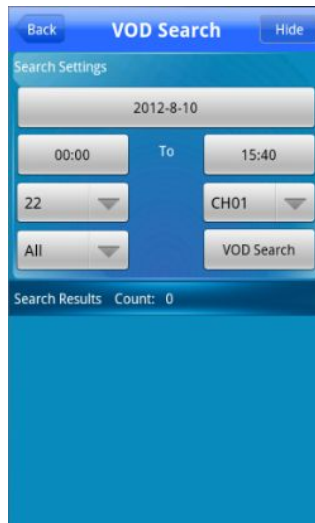
Click device, see below picture



Picture 9 Config device

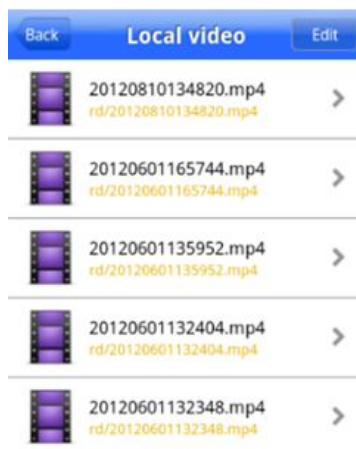
4.1.8

: Remote playback, see below picture



Picture 10 Remote playback

Search records by time,device,channel, see below picture



Picture 11 Remote playback

Click the file to playback, see below picture



Picture 12 Remote playback

4.1.9

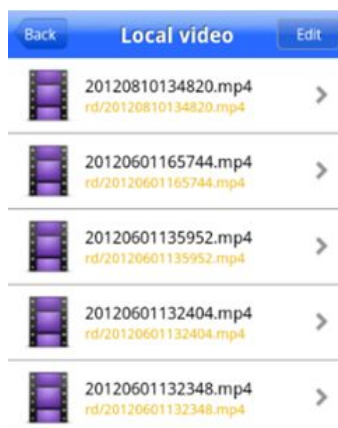
: Album, you can find snapshot picture here, see below picture



Picture 13 Snapshot picture

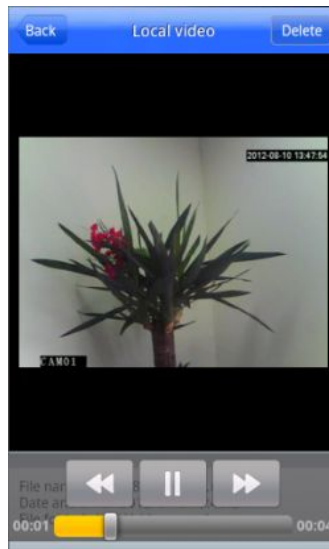
4.1.10

Local record: click it to record and save in mobile, see below picture



Picture 14 Local record file

Click the file to playback, see below picture:



Picture 15 Local playback

4.1.11

bout: Information for this mobile client software, see below picture.



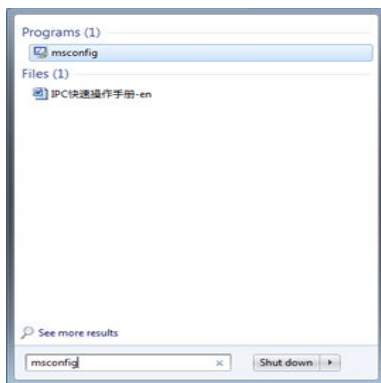
Picture 16 About

5. Common Questions

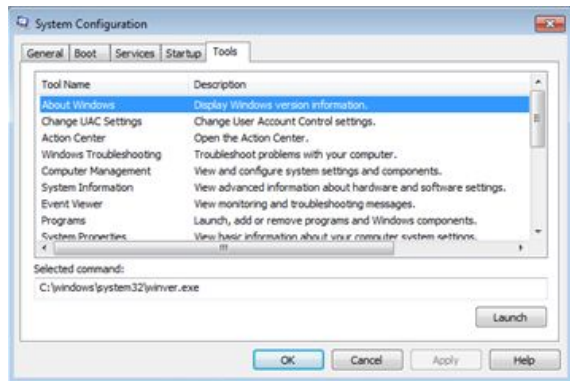
5.1 IE activeX installation question.

IE activeX installation in WIN7

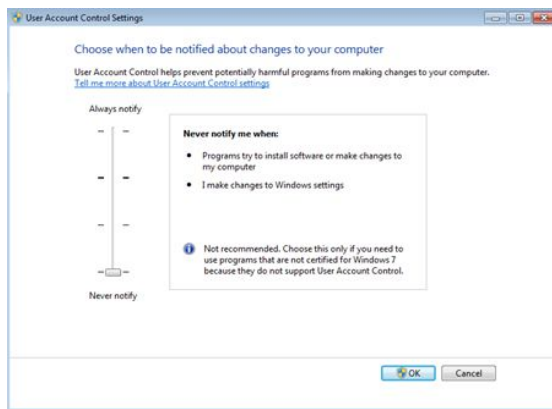
(1) Lower PC security level, System->Run, input "msconfig", then Enter, see below picture



Second, set UAC level

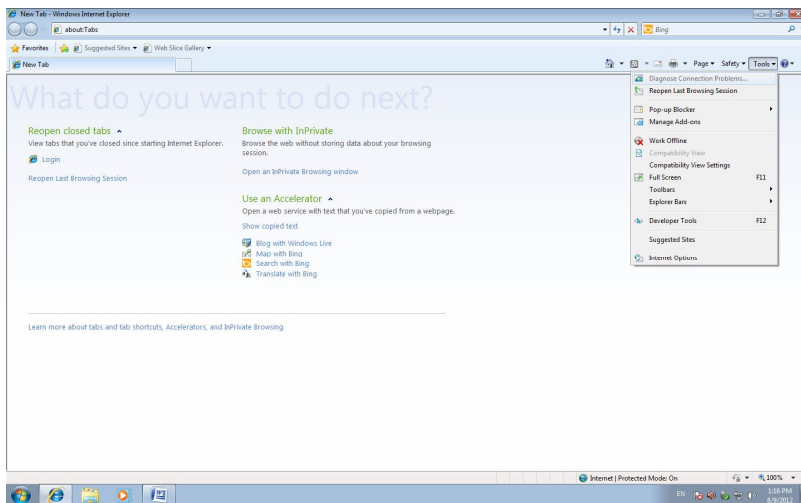


Startu

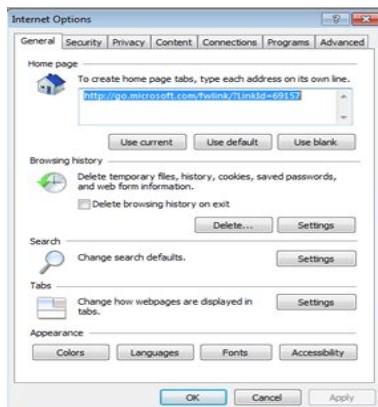


(2) Set IE security level

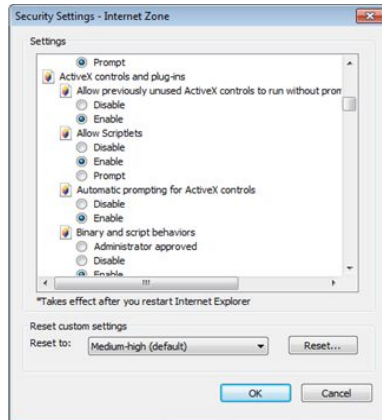
Internet option



Security level



In ActiveX subdirectory, choose "enable"



IE activeX installation in XP system

In XP system, only need to set IE security level, operation same as win7

5.2 Lens has dark corner

Chip size is not matched with lens, 1/2.5 chip need 1/2.5 or 1/2 lens (C mount need to add CS ring)

5.3 Moving object has dragged shadow in the live screen

It's caused by insufficient frame rate after enable electronic shutter. In dark environment, our IP camera will auto startup electronic shutter, lower stream, so it will come out dragged shadow, you can go to CMS/WEB to close "electronic shutter"

5.4 IR-CUT switch continuously

In Mainmenu->System->Camera parameters, set IR-CUT "IR synchronous switch". If not have IR board, choose "Automatically switch"

5.5 Upgrade unsuccessful

Firmware is not matched with this IP camera, or UpgradeTool is old, pls let us know, we will solve it.

5.6 Can not connect the device

1. User UpgradeTool to search IP address, or ping this IP camera ip address, to see if successful
2. Go to TV output,check IP settings if it's correct.
3. Check LAN right.

5.7 WIFI is not available

1. Check WIFI connection to USB
2. Check WIFI router if enable wireless.
3. Check WIFI password
- 4.CheckWIFI module model(RT3070,RT257)
5. Check WIFI ip address
- 6.if others, pls contact us.

5.8 Cloud server login, but can not get live videos

IE activeX is not installed, so follow instruction to install activex, please close anti-virus software before install, because anti-virus software intercepts IE activex sometimes.

Note: This is only fast operation user manual, if need detailed instruction, please refer to CD

PRODUCT WARRANTY CARD

Product Name		Model	
Purchase Date		Distributor	
Purchase Place			
Customer Name		Occupation	
Tel		Post Code	
Company			
Address			

Warranty Instructions:

1. Please contact us when the product is caused by its own fault within 1year warranty.
2. Please mail us your written warranty card as soon as possible after purchasing our products so that we can repair or replace this product to its original operation condition for free. Or the company will not deal with it.
3. Please write the truth information on the warranty card.
4. Paid for repairing as follows:
 - A: Equipment failure caused by human operation
 - B: Equipment failure caused by not conforming to the using environment
 - C: No warranty card
 - D: Warranty expired