

# Use Instructions of Player

## 1. Installation Steps

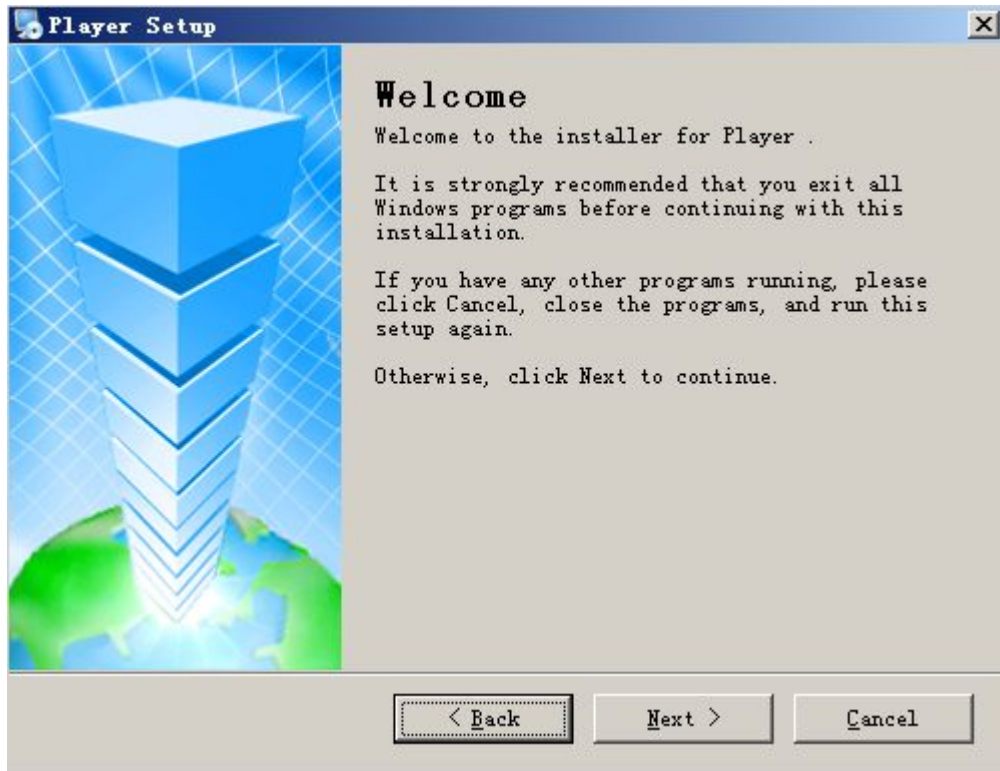


General\_Player\_V1.6.  
0.2.R.20140317.exe

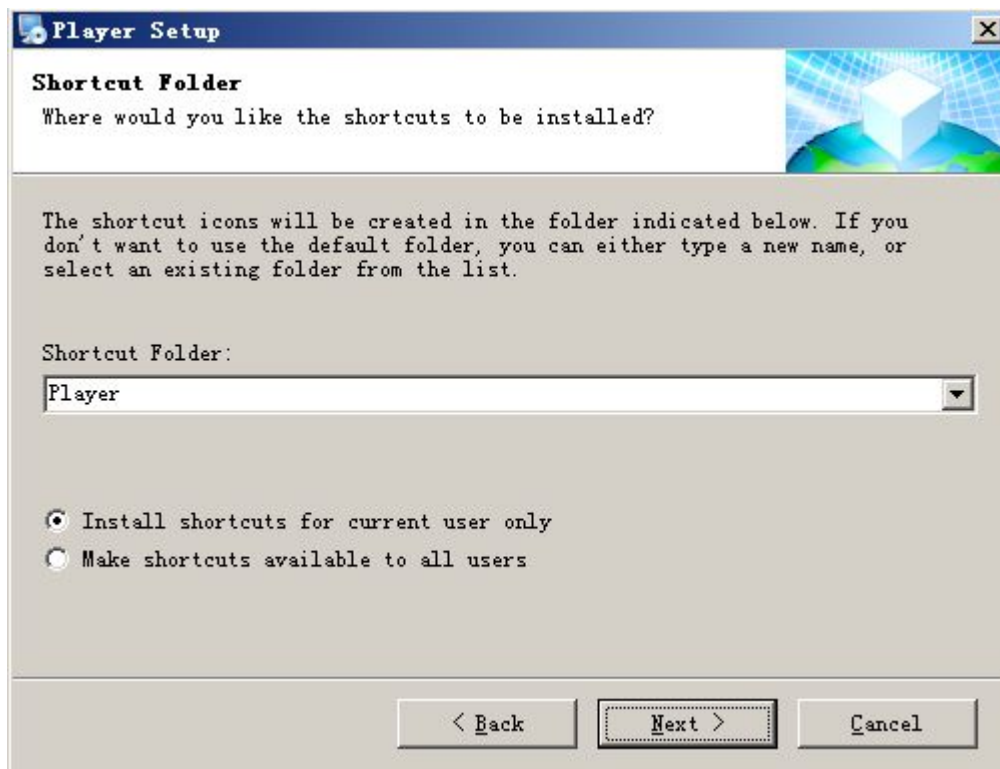
- 1) Find and double click the file of `General_Player_V1.6.0.2.R.20140317.exe` in the CD and the window as below will popping up.



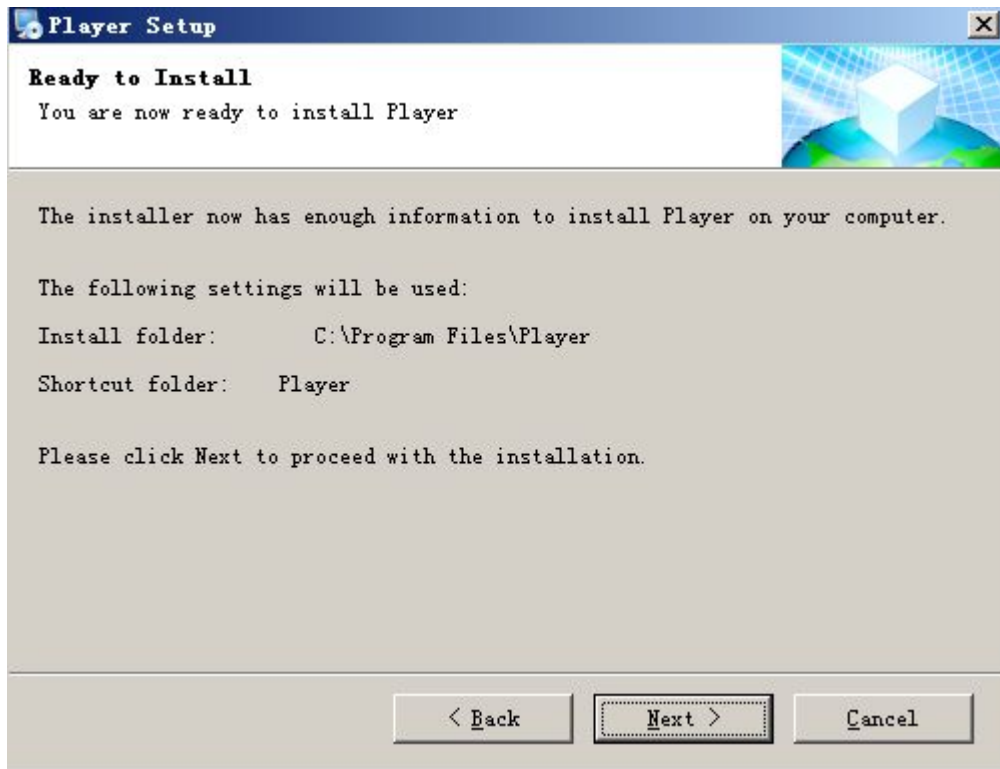
- 2) Click "next step", and the window as bellowed will popping up.



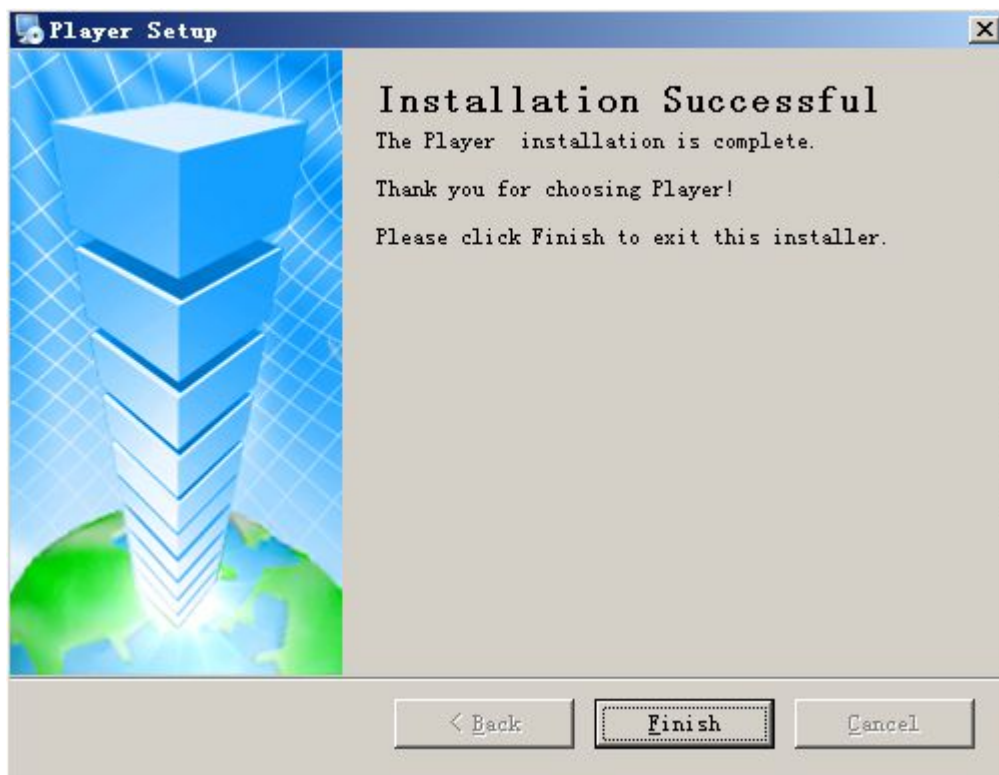
3) Click "next step", and the window as bellowed will popping up.



4) Enter the user information and click "next step", and the window as bellowed will popping up.



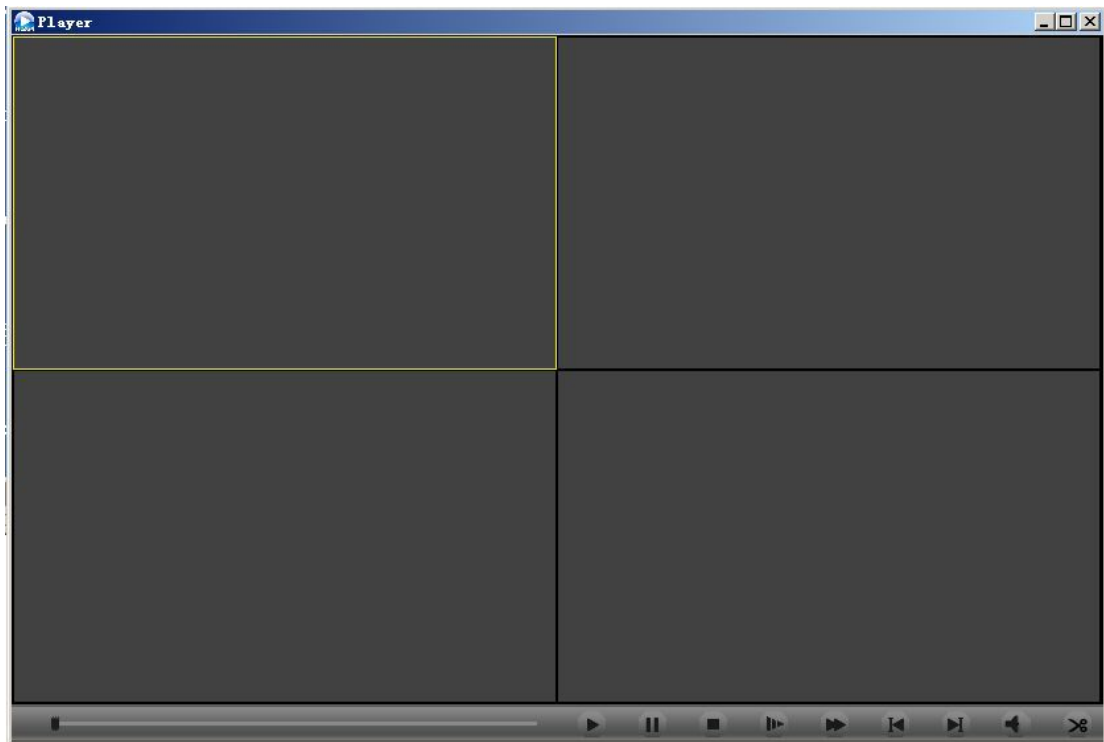
- 5) Click “next step” to start the install the player and the window as bellowed will popping up.



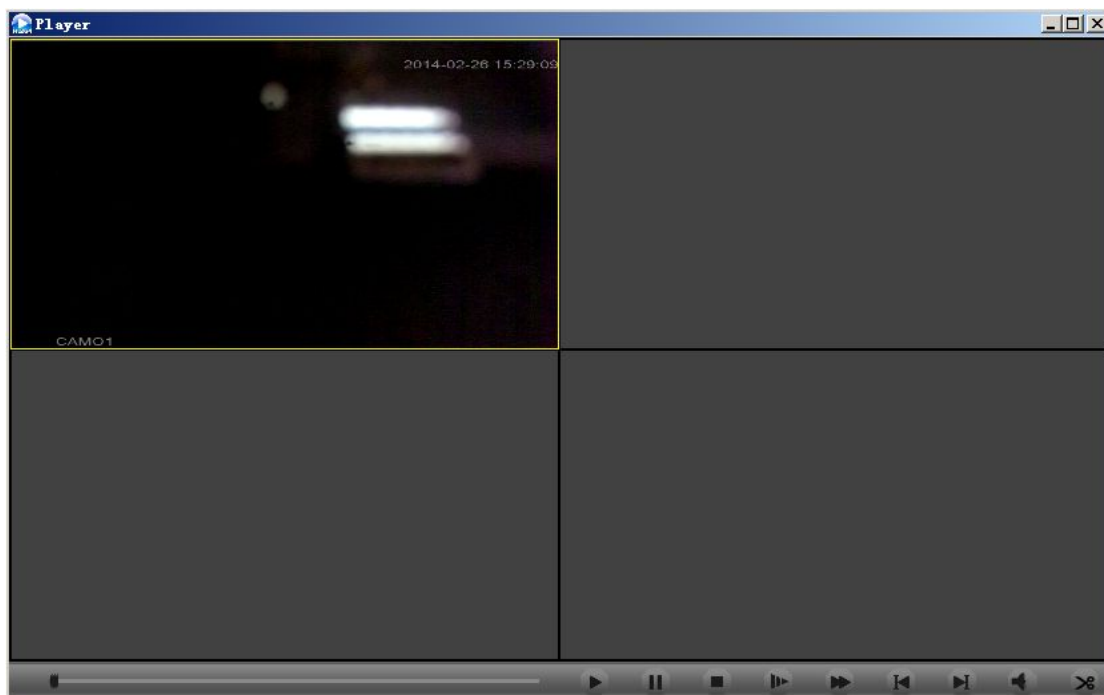
- 6) Click “finished” to complete the install. Now the desktop will appear a icon



2. Player operation interface

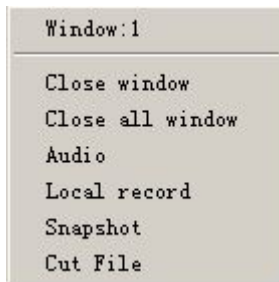


3. On the interface of player, click the button of play to open the folder and find the video file to be played. Then double click the file and the video file can be played on the selected window. The player interface is as bellowed:



4. Right click on the playing window, and a shortcut menu will appear. you can left click to

corresponding option according to your requests.



Note of all the options on the shortcut menu:

Close the window: shut off the vide playing of your selected window.

Close all the windows: shut off the vide playing of all the windows.

Audio: open the audio of your selected window.

Local video: save the video playing on the selected window to the computer and the routine of saving can be set according to your request. (Note: this function is not supported)

Snapshot: save the picture of a certain moment on the video playing and the save routine can be manual set.

5. On the video playing, you can choose to click on the controls bottom right of the Diskplayer according to your requirements, such as: play, pause, stop, slow 1、2、3, quick 1、2、3, previous frame(not supported yet), next frame. The corresponding control icons are as bellowed::



Note:

A, constantly click the button of slow and fast, the playing speed with circle among three level of 1, 2, 3. If you do not want to fast play or slow play, click "play" and it will stop fast play or slow play and play in normal speed.

B, double click the window of video playing, the video can be maximized and double click again to return to the normal interface.