

# IPCOCX-X User Manual

Version 4.1.43.4

# Content

1 Foreword.....	- 1 -
2 Install Guide.....	- 1 -
2.1 Preparation before install.....	- 1 -
2.2 Install OCX.....	- 1 -
3 The introduction of IPCOCX-X .....	- 2 -
3.1 Camera Settings.....	- 4 -
3.1.1 Video Setting.....	- 5 -
3.1.2 OSD.....	- 5 -
3.2 Image Settings.....	- 5 -
3.3 Network.....	- 7 -
3.4 Time.....	- 8 -
3.5 Storage.....	- 8 -
3.6 Service.....	- 9 -
3.6.1 SMTP.....	- 9 -
3.6.2 FTP.....	- 10 -
3.6.3 DDNS.....	- 10 -
3.7 Motion Detect.....	- 11 -
3.8 Privacy Covered.....	- 12 -
3.9 Alarm Setting.....	- 12 -
3.10 User Management.....	- 13 -
3.11 Log search.....	- 14 -
3.12 Restore.....	- 15 -
4 Frequently Asked Questions.....	- 16 -
4.1 Why can not access the camera by IE?.....	- 16 -
4.2 Why can not switch the data? .....	- 16 -
4.3 Why can not access the camera after update? .....	- 16 -
4.4 Why can not show the whole interface?.....	- 17 -

# 1 Foreword

Thank you very much for choosing our products, we will wholeheartedly provide the best service for you, if you have any questions or need please feel free to contact our technical support.

This manual is based on the current released OCX, since our irregular update to Optimized the software performances or introduce new features, so it is possible that part of the instruction screen-shots is different with your actually use. Without prior notice, we will update in the new version of user manual.

This user manual may contain technical inaccuracies or typographical errors, sincerely hope you can give us valuable feedback, we will try to enrich and improve, thank you for your support.

## 2 Install Guide

### 2.1 Preparation before install

After ensuring the connection between IPC and all computer hardware of user is completed and the device is powered normal,open the computer ,run ping the IP address of IPC(the IP address of IPC in the LAN must be unique ),eg.IPC's IP :58.250.25.18,run “ping 58.250.25.18”.If the IPC has responded as Figure2- 1, indicates that the network connection is normal, you can download OCX controls.

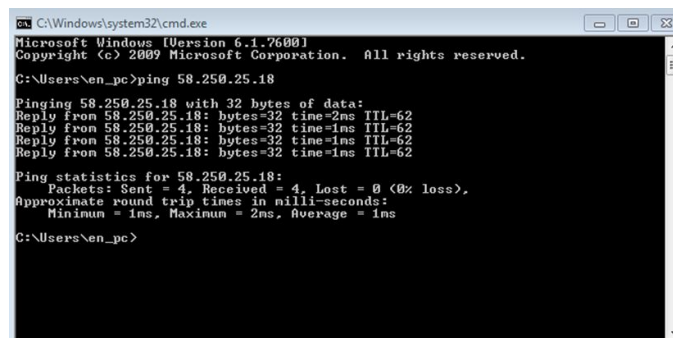


Figure2- 1 Ping respond

### 2.2 Install OCX

Please open the IE browser first.Input the IP address of IPC in the address bar.

If you first access the IPC,when you have inputted IP address,the interface below will pop up,as Figure2- 2:

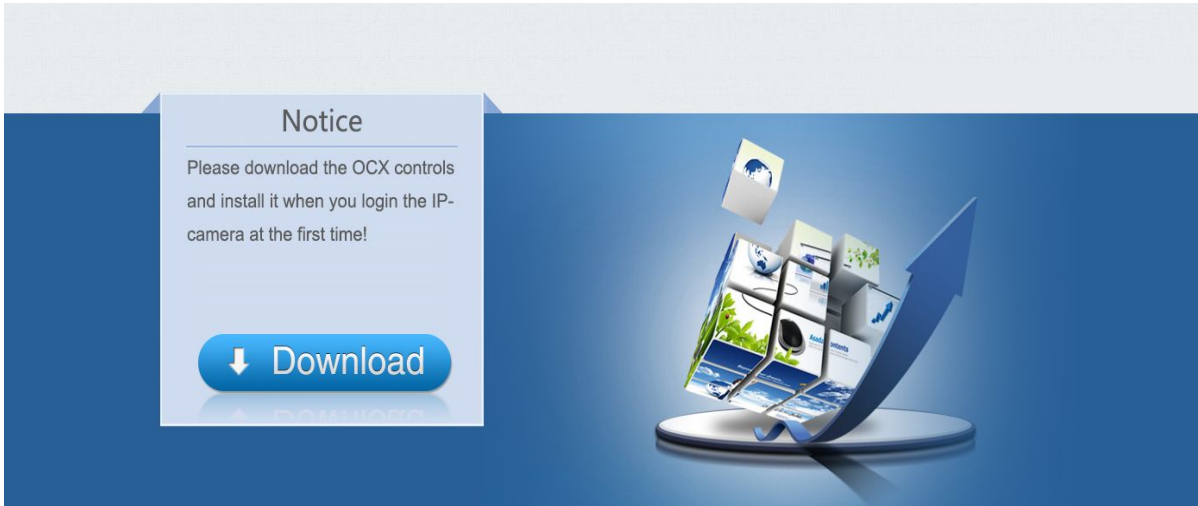


Figure2- 2 Download screen

Please click here  to download the OCX controls,as is shown in the following picture:



Click run, the system will automatically download the OCX,click “yes” in the following picture:



Then it will install the OCX, when completed ,the window below will pop up,as Figure2- 3:

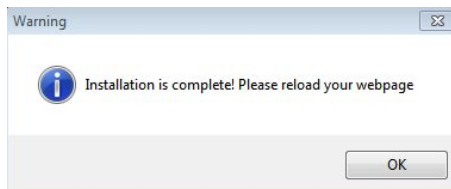


Figure2- 3 Complete

Click **【OK】** and refresh the page.

### 3 The introduction of IPCOCX-X

Please open the IE browser first.Input the IP address of IPC in the address bar. it will go to

the login interface below,as Figure3- 1:

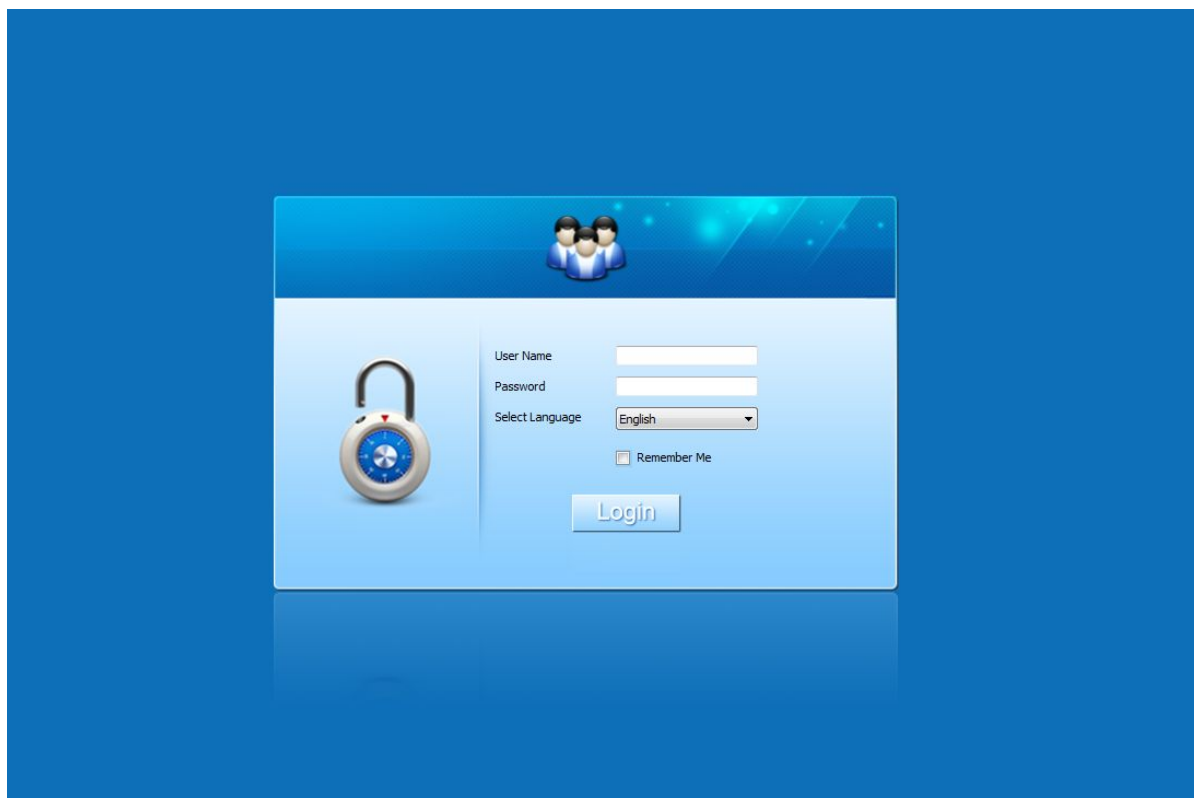


Figure3- 1 Login interface

Please input your user name and Password and select the language according to your need,the default username is admin ,password is admin.If you want to skip this interface next time,please select 【 Remember Me 】 and click 【 Login 】 ,below is Main Interface,main interface is the live video interface,as Figure3- 2:

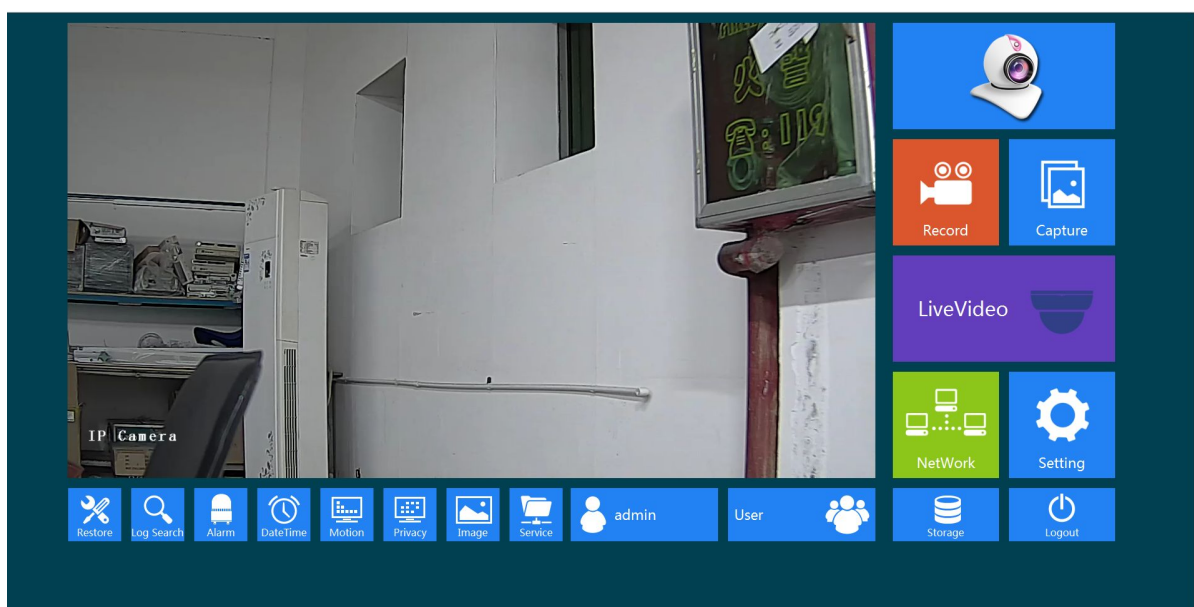



Figure3- 2 Main Interface

 :The username login the system currently.



:Click it to start recording,click it again to stop recording ,then it will pop up the video storage folder.

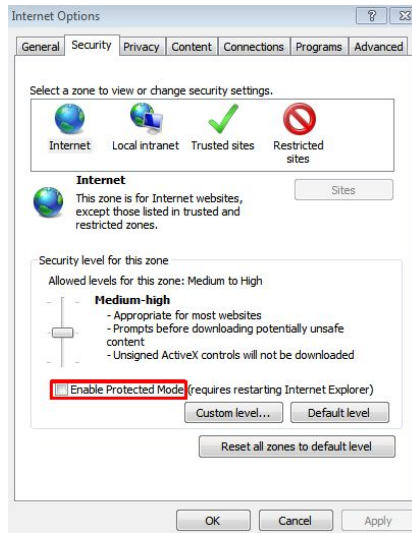


:Click it to snapshot ,then it will pop up the picture storage folder.



:Finish the current task and exit the system.

**Note:** If you capture failed and the storage folder can't pop up automatically ,please check your IE,don't select "Enable protected mode",as the figure:



### 3.1 Camera Settings



Click to set up camera,as Figure3- 3:

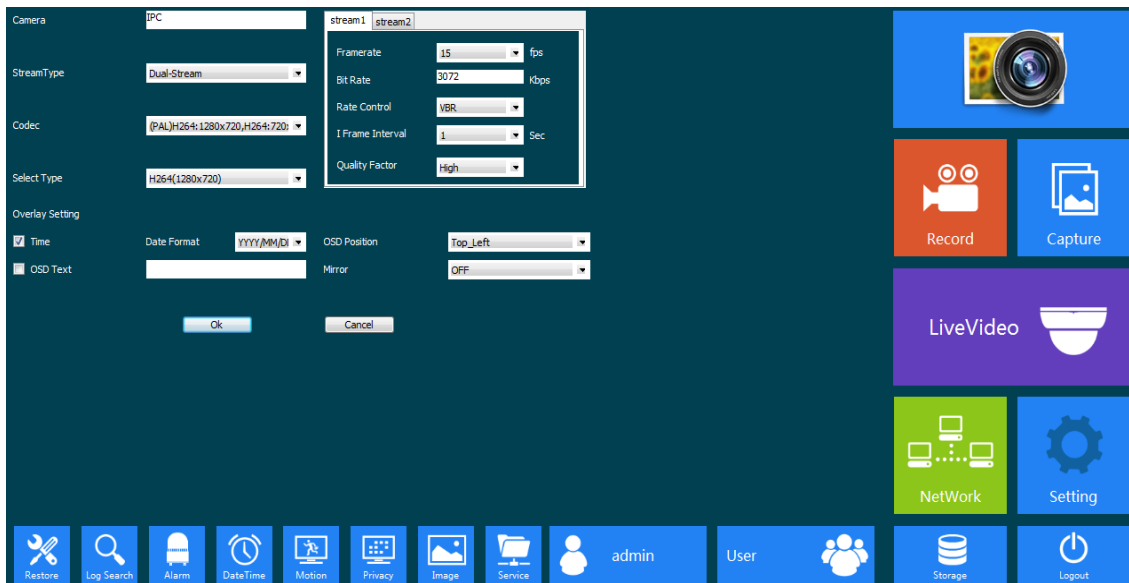


Figure3- 3 Camera Settings

### 3.1.1 Video Setting

Allow setting camera name,stream type,mirror,codec,framerate,bit rate,rate control:

【Camera】 :Your camera name.

【Stream Type】 :Here Single/Double/Tri-Stream available.

【Codec】 :Choose coding and resolution.

【Select Type】: Here Single/Double/Tri-Stream available.

【Frame rate】 :25fps adjustable(PAL);30fps adjustable(NTSC).

【Bit rate】 :The rate of code-stream,the higher the bit rate the better video quality.

【 Rate Control 】 :Fixed(CBR) or dynamic(VBR).Fixed on suitable for fixed bandwidth.Dynamic suitable for record.

As Figure 3-4:

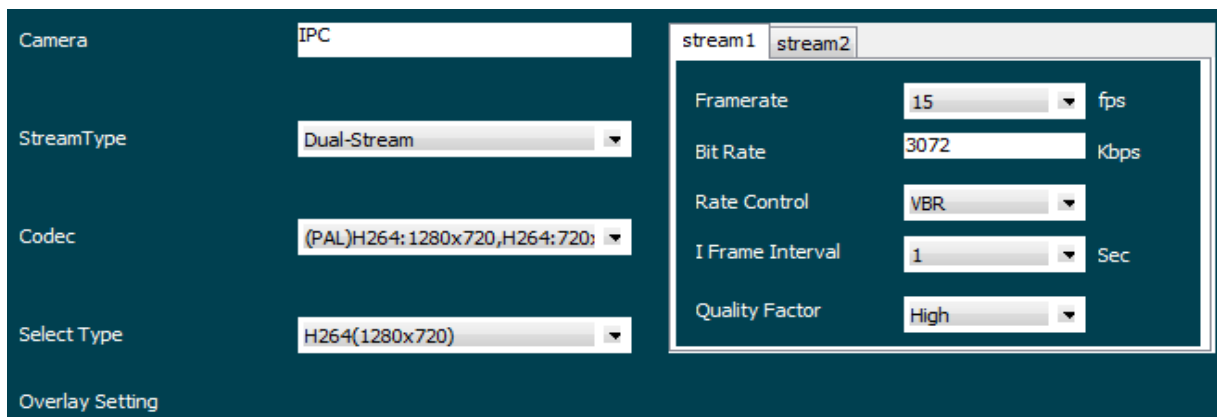


Figure3- 4 Video Settings

### 3.1.2 OSD

OSD is “on screen display”,mean the info accompany with the image.It allows you to set the Time Format,OSD Position and OSD Text.As Figure3- 5.



Figure3- 5 OSD Settings

## 3.2 Image Settings

You can input the value manually to set brightness,contrast,saturation,sharpness ,also can drag the slider to set .These parameters shall be set according to the actual environment.As Figure3- 6

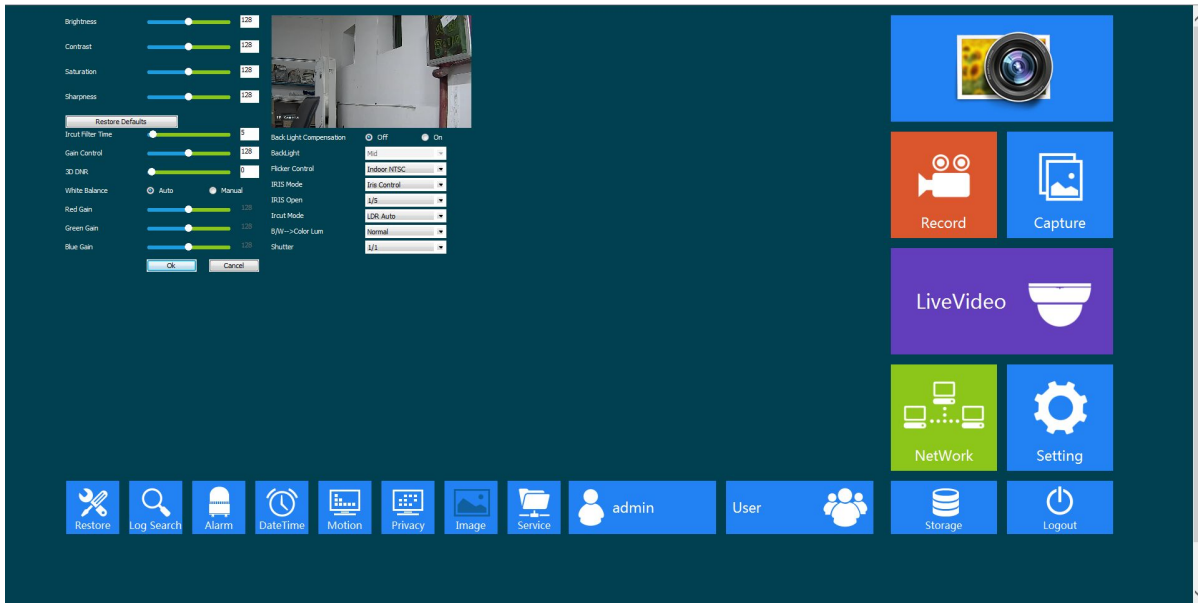


Figure3- 6 Image Settings



:Right, the image brighter;Left,darker, it can save automatically.



:Right, the higher the contrast; Left, the lower the contrast, it can save automatically.



:Right, the higher the saturation; Left, the lower the saturation, it can save automatically.



:To the right, the higher the sharpness; Left, lower sharpness, it can save automatically.



:Restored to the state without making any changes.

**Back Light Compensation:**If backlight compensation is open,you can still be able to see the main scene in the center of the light background environment.

**Flicker Control:**Here you can select indoor PAL(25fps adjustable),indoor NTSC(30fps adjustable),out door.

**IRIS Mode :** If you choose Auto Iris, the system defaults IR is 100%, if you select the Iris control, you can adjust the infrared intensity.

**IRIS Open:** adjust the infrared intensity.

**Ircut Mode:**Here 4 choices LDR Auto,Video Auto,Color,B/W.Generally,we choose LDR Auto to ensure it change automatically between B/W and color.

**B/W->Color Lum:**The rendering standards of black/white to color (low,standard, high).

**Shutter:**The shorter the time, the less light through the shutter, the longer,more light through the shutter.If the shutter time is too long,the greater noise.



### 3.3 Network



Click **Network** to set up Network, as Figure3- 7:



Figure3- 7 Network Settings

**【 IP Address 】** :The camera address, it is used to login a camera through network. Legal IP address can be set successfully and saved, the system will restart after the new IP is saved, you must use the new IP address to login again after the change, the illegal IP can't be saved, and will prompt error.

**【 Netmask 】** :Net mask is combined with IP address .Set the correct net mask can be saved, and take effect after settings . False or illegal net mask cannot be saved, and will prompt error.

**【 Default Gateway 】** :Ensure that the default gateway of the camera is the same with PC.

**【 DNS 】**:The DNS address is the address of the host run domain name service program. The DNS server address is provided by the user according to the local network operators, please set up in accordance with the DNS routing.

**【 HTTP port 】** :The HTTP port is used to visit the camera through the IE browser. The default is 80.

**【 RTSP port 】** :RTSP port is used to visit the camera through supporting RTSP streaming media player (likes VLC Player), the port, can be configured. If the viewer and the device in the same local area network, do not need to be on the decline for the port mapping; If you look through a remote access, this port need to have a map on the route.

**【 Mobile port 】** :Mobile port is used for visit the camera through mobile phone client, this port can be configured. If mobile phones and devices in the same local area network (LAN), do not need to make a mobile port mapping on the routing. If mobile phone remote access access equipment, the need on the routing for the port mapping.

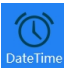
**【 FREE IP 】** : Download FREEIP mobile client via your mobile phone and scan QR code

**【 Danale 】** : Download Danale mobile client via your mobile phone and scan QR code

Click OK to finish setting.

Click **【 OK 】** to finish setting.

## 3.4 Time

Click  to set up time. there are 3 choices that Set Manually, Synchronize with computer time, Synchronize with SNTP server. As Figure3- 8.

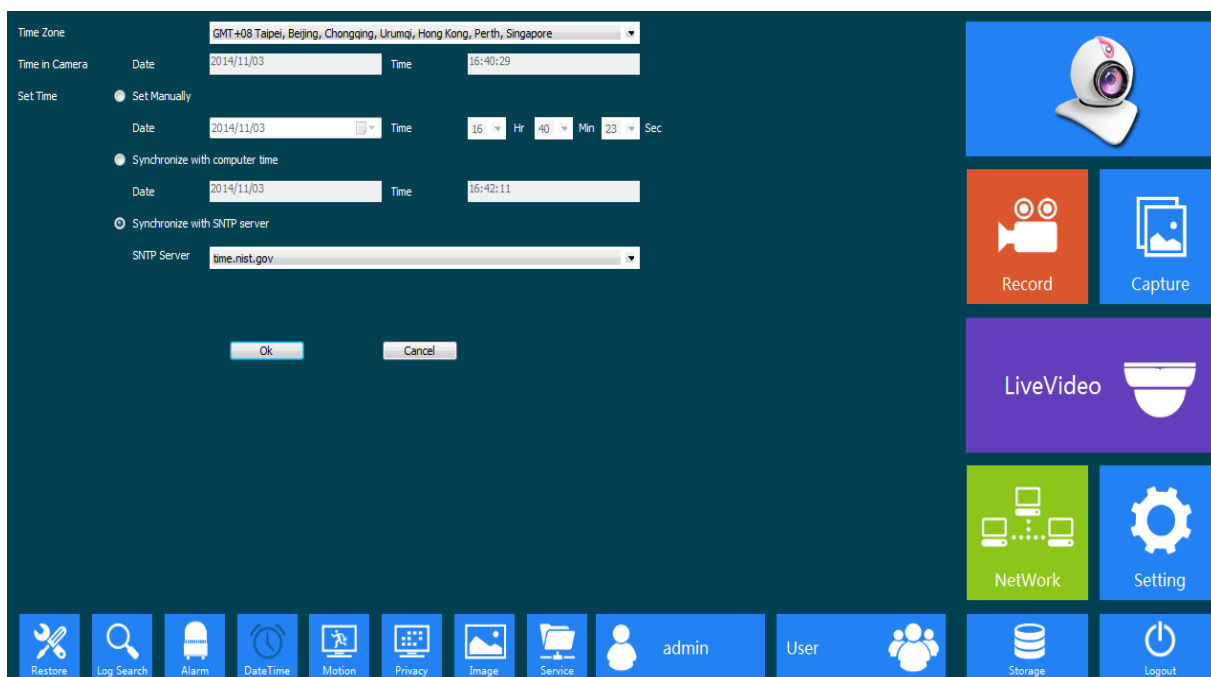



Figure3- 8 Time Settings

**【Set Manually】:** Users can update time manually when choosing this mode.

**【Synchronize with computer time】:** The camera will Synchronize with the computer time.

**【Synchronize with SNTP server】:** “SNTP Server” will choose a same time zone with the client automatically. Input the SNTP Server, and select the time zone according to your need. Save all parameter, then it will update as a network clock. Here you must connect the IPC to the internet. Click **【OK】** to finish and save settings.

## 3.5 Storage

Click  to set up the Storage. As Figure3- 9.

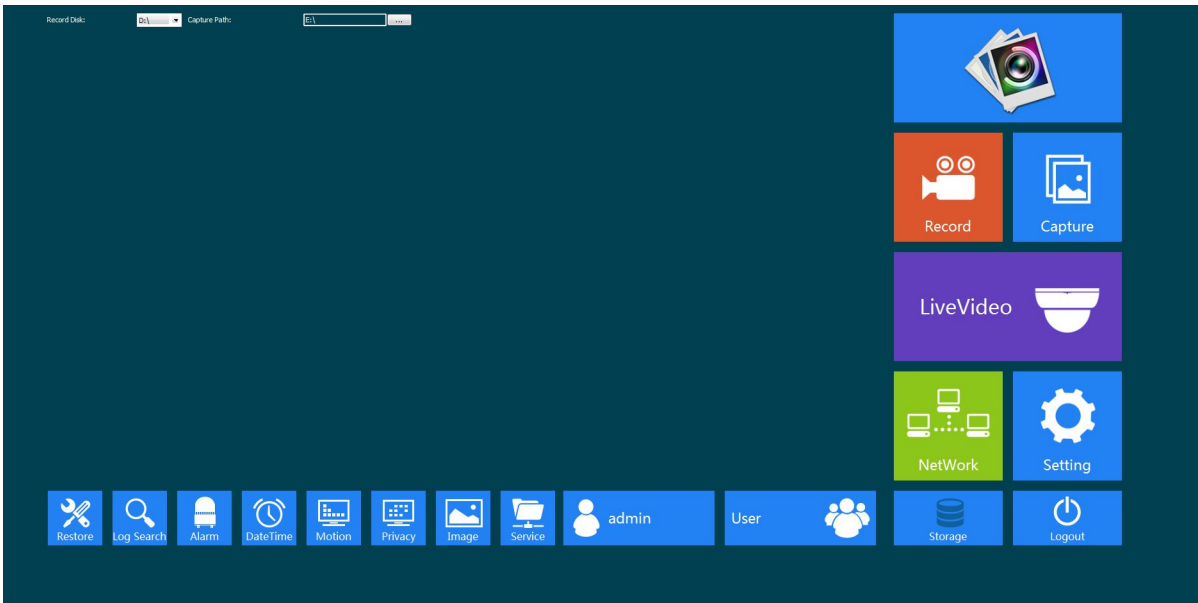


Figure3- 9 Storage Interface

Here you can set the save paths of capture and record via IE client. Then the pictures and records will be saved in local PC according to the paths you've just set.

### 3.6 Service

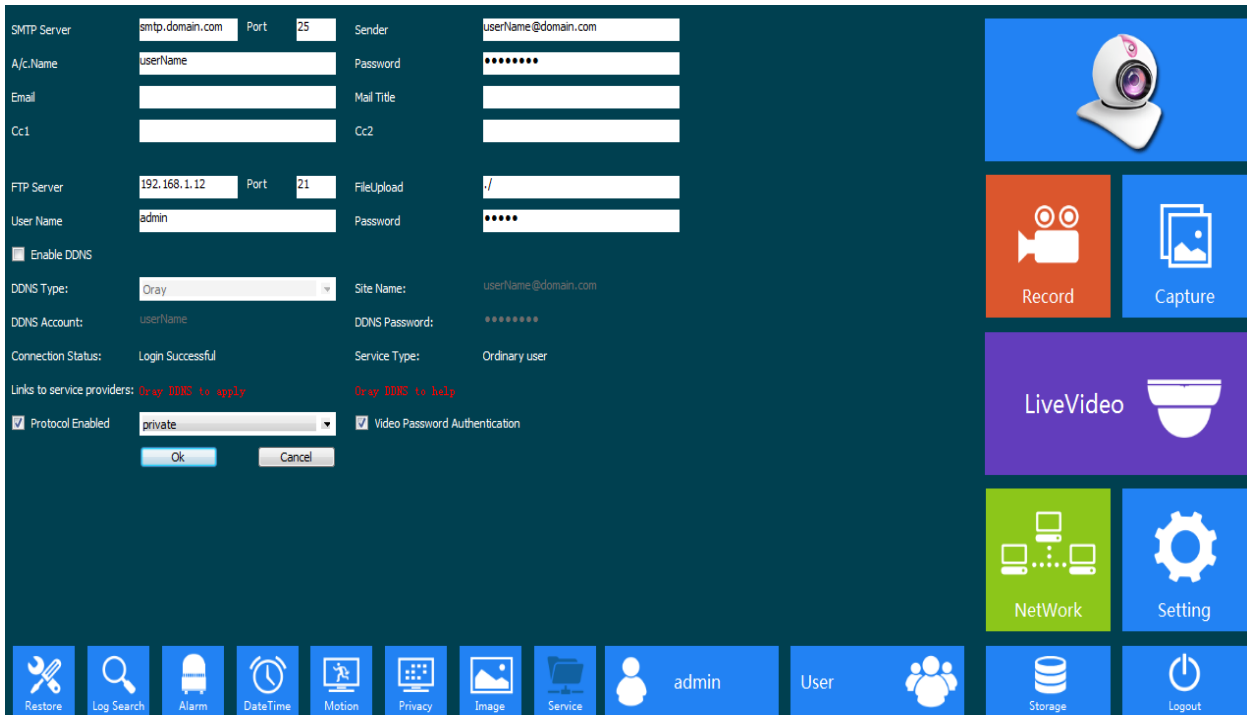


Figure3- 10 Service Settings

#### 3.6.1 SMTP

As Figure3- 11.

SMTP Server	smtp.domain.com	Port	25	Sender	userName@domain.com
A/c.Name	userName	Password	●●●●●●		
Email		Mail Title			
Cc1		Cc2			

Figure3- 11 SMTP Set

【A/C.Name】:Here is your outbox.

【Password】:The password of your outbox.

【Sender】:You can send Email from it,it should be effective.

【SMTP Server】:Log mailbox to mailbox settings to inquire the entry method of SMTP server .

【Port】SMTP Server port.Generally the default port number is 25.

【Email】:Your inbox,the e-mail address can be the same with sender,it should be effective.

【MailTile】:The title of the motion detecting alarm mail

【Cc1 Cc2】:Cc email to other email

**Note:Ensuring the mailbox supports for SMTP mail function.**

### 3.6.2 FTP

As Figure3- 12.

FTP Server	192.168.1.12	Port	21	FileUpload	/
User Name	admin	Password	●●●●		

Figure3- 12 FTP Settings

【FTP Server】:The address of your FTP server.

【Port】:The FTP server port.Default port is 21.

【Username】:The name you registered form FTP server .

【FileUpload】:The save path of the motion alarm files.You can create the names such as “alarm”, “log”, “set”, “update” or other directory name, also you can enter “./” then the entire document will be save in the root of the FTP server.

【Password】:The password you registered from FTP server.

### 3.6.3 DDNS

Set the camera DDNS ,it supports CN99, Oray etc. Mainstream free domain names.If login

successfully, you can access the IPC via the site name, the access rule is "http://sitename:port". As Figure3- 13 .

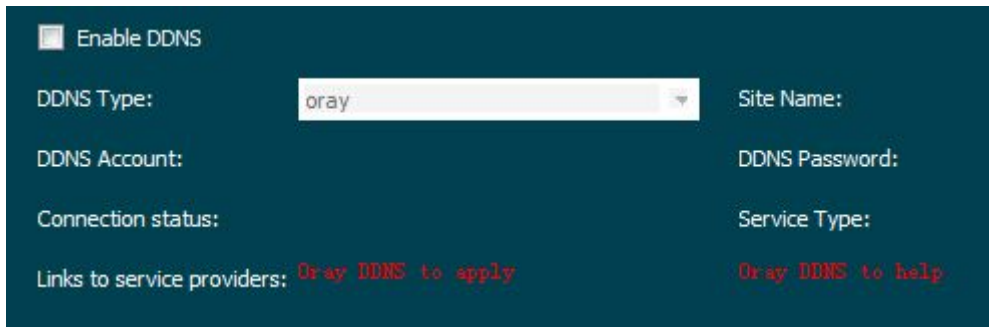


Figure3- 13 DDNS Settings

**【DDNS Type】** :Choose DDNS Type .Such as Oray/3322.org.

**【Site Name】** :According to domain integrated address.

**【DDNS Account】** :One account can apply different domain name, the provider request not same.

**【DDNS Password】** The related password when you apply the domain name.

**【Connection status】** :The current state of the connection with the DDNS server.

**【Service Type】** : The service type registered on the DDNS server.

**Note:** Before using this function, please go to the website to register the domain names, obtain the domain name, account number and password.

Click **【OK】** to finish setting.

### 3.7 Motion Detect

Click , as Figure3- 14:

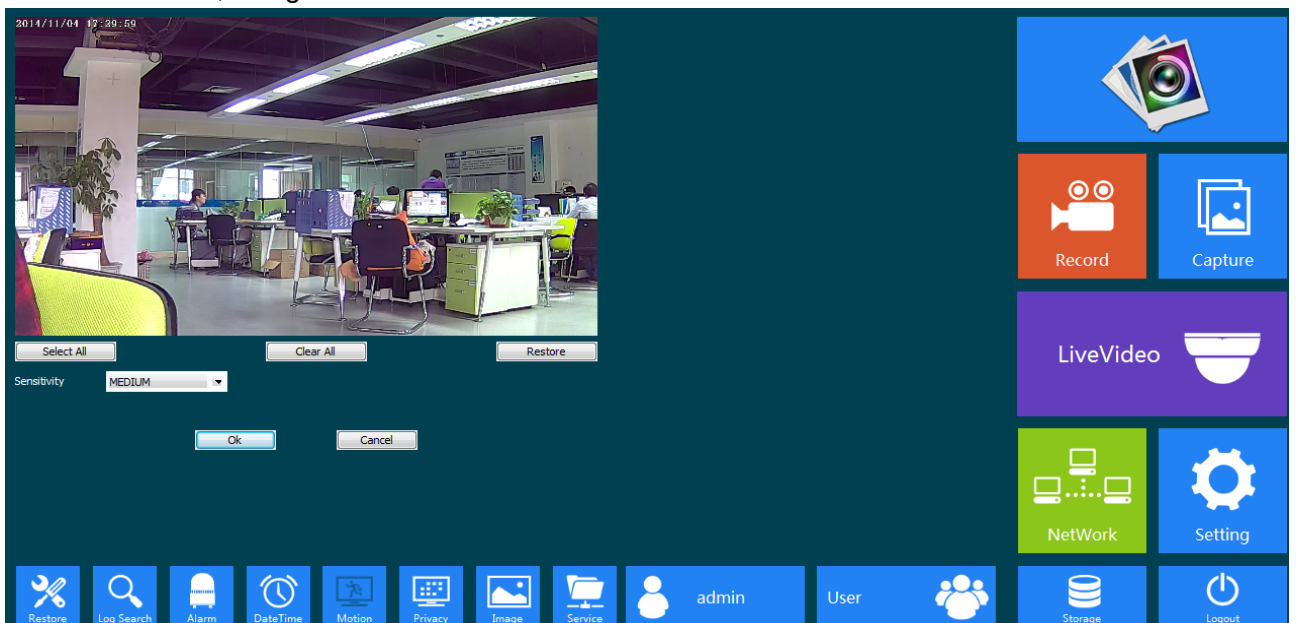


Figure3- 14 Motion Detect Settings

**【Sensitivity】** :Set up the sensitivity of motion detection, There are 3 Level Selectable : LOW/MEDIUM/HIGH. You also can set the figure according to your need.


【Select All】 :You can choose all the video screen.

【Clear All】 :Remove all the selected region.

【Restore】 :Return to the last saved state.

Click 【OK】 to finish setting.

### 3.8 Privacy Covered

Click here ,you will see the following interface,as Figure3- 15:

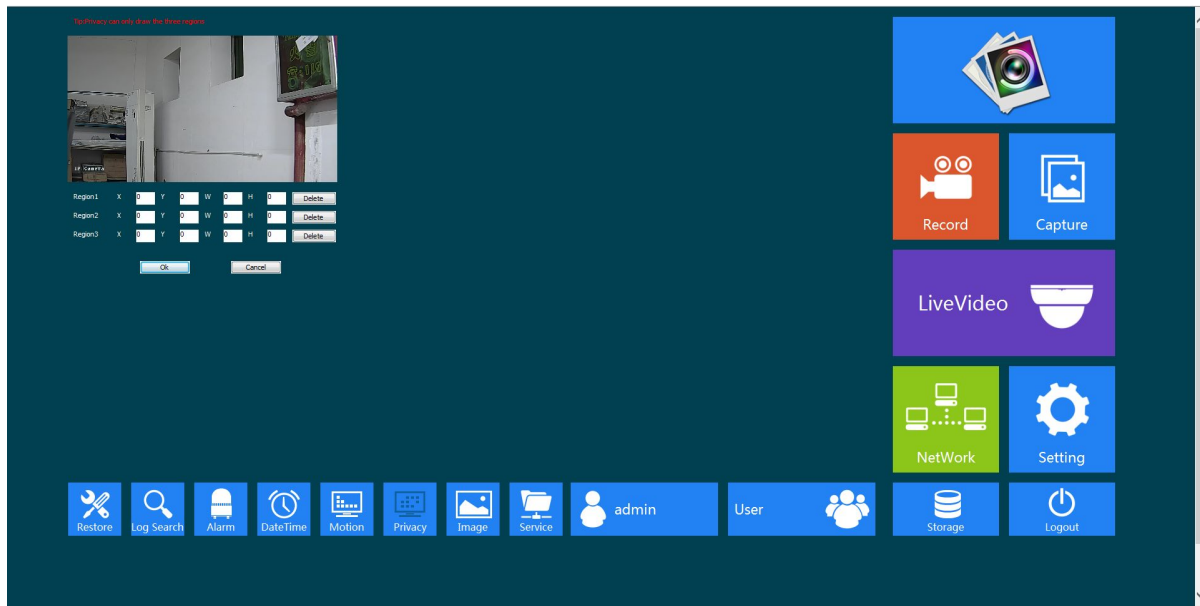
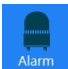


Figure3- 15 Privacy Covered Settings

Pressing the left mouse button and drag to select area in the region.Region 1、 Region 2、 Region 3 bellow will show the corresponding coordinates, width, and height of the region .If you want to delete a region, click on the corresponding 【Delete】 button,Click 【OK】 to complete the setting.

**Note:Max 3 areas allowed.**

### 3.9 Alarm Setting

Click ,the following screen will appear,as Figure3- 16 :

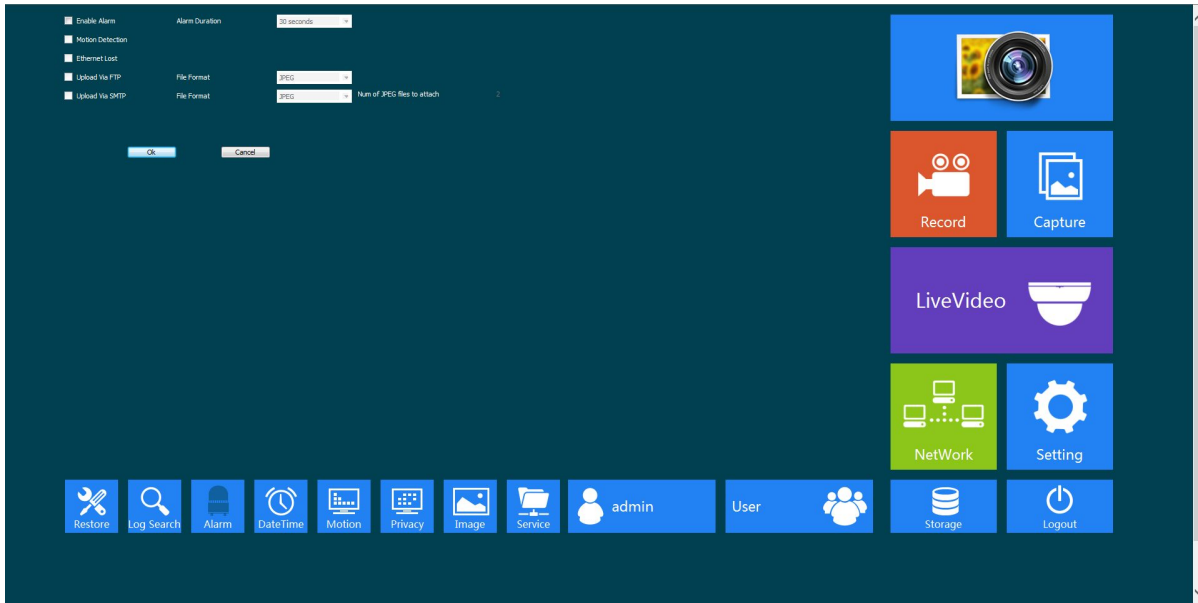


Figure3- 16 Alarm Settings

【Enable Alarm】 :Select it to start alarm.

【Alarm Duration】 :The alarm lasts time .

【 Motion Detection 】: It can be set up alarm linkage action. Tick when motion detect happened, it will trigger the alarm linkage.

【 Ethernet Lost 】: It can be set up alarm linkage action. Tick when net disconnection happened, it will trigger the alarm linkage.

【 Upload via FTP】: Trigger the alarm, it will send screenshots or video files to a specified FTP server. The FTP setting details please see section 3.5.2 FTP.

【 Upload via SMTP】: Trigger the alarm, it will send screenshots or video files to a specified Email account. The SMTP setting details please see section 3.5.1 SMTP.

Click 【OK】 to finish setting.

### 3.10 User Management

User management is use to add,delete or modify user name and password,and setup corresponding authority.User name should have min-number of 4 characters and max-number of 31 characters.Password should have min number 4 characters and max-number of 15 characters.You can only add up to 16 users.

Users are separated into three classes:

- ◆ Admin:Authorized to setup device and manage users.
- ◆ Operator:Admit to setup device, no authority to manage user.
- ◆ Viewer:Admit to browse monitor image,no authority to setup device and manage user.

The default user name is admin ,password is admin ,you can't edit or delete user name and password.

Click  to manage users,as Figure3- 17 :

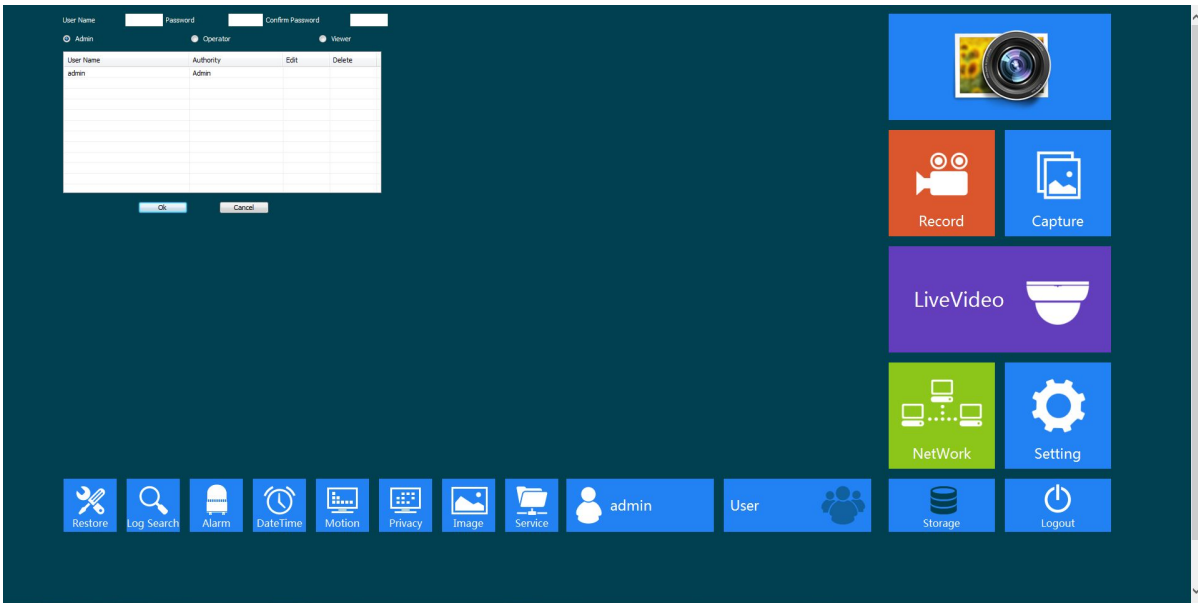



Figure3- 17 User Management

Input the user name and password,then input the password to confirm password.Select authority,then click **【OK】** to add user.Click"Delete"to delete users.

### 3.11 Log search

Click  to search log of camera .As Figure3- 18 :

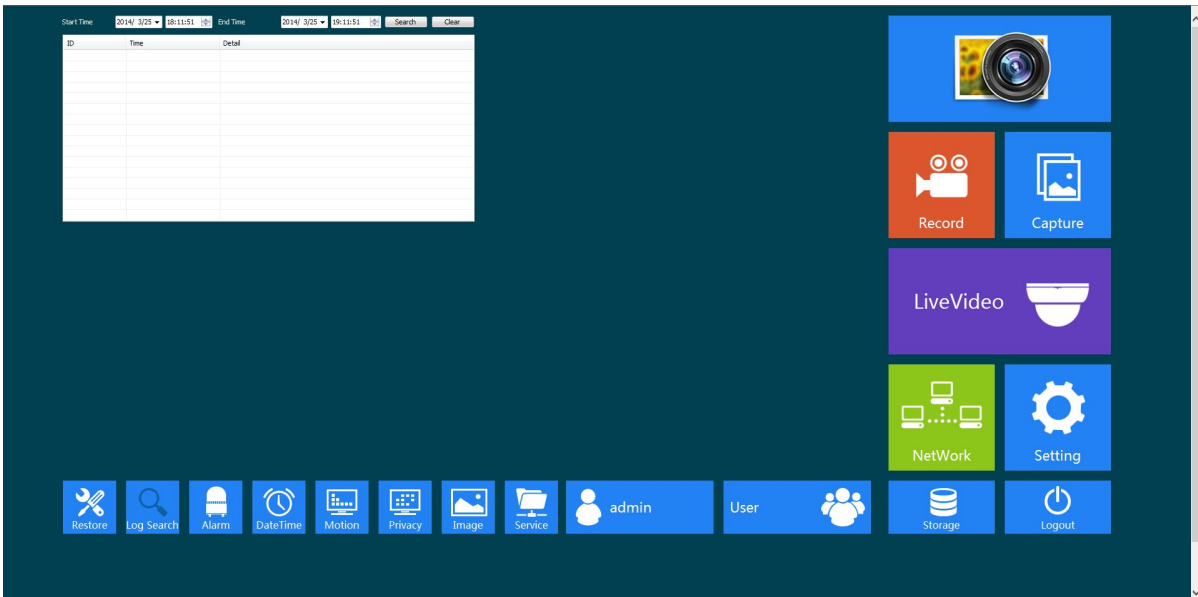



Figure3- 18 Log Search

Choose start time and end time ,click **【Search】** ,then camera log will appear.Click **【Clear】** will delete all the log.Click **【OK】** to finish and save settings.



## 3.12 Restore

Click  to reboot system, restore setting, scheduled reboot, upgrade system, view version information. As Figure 3-19

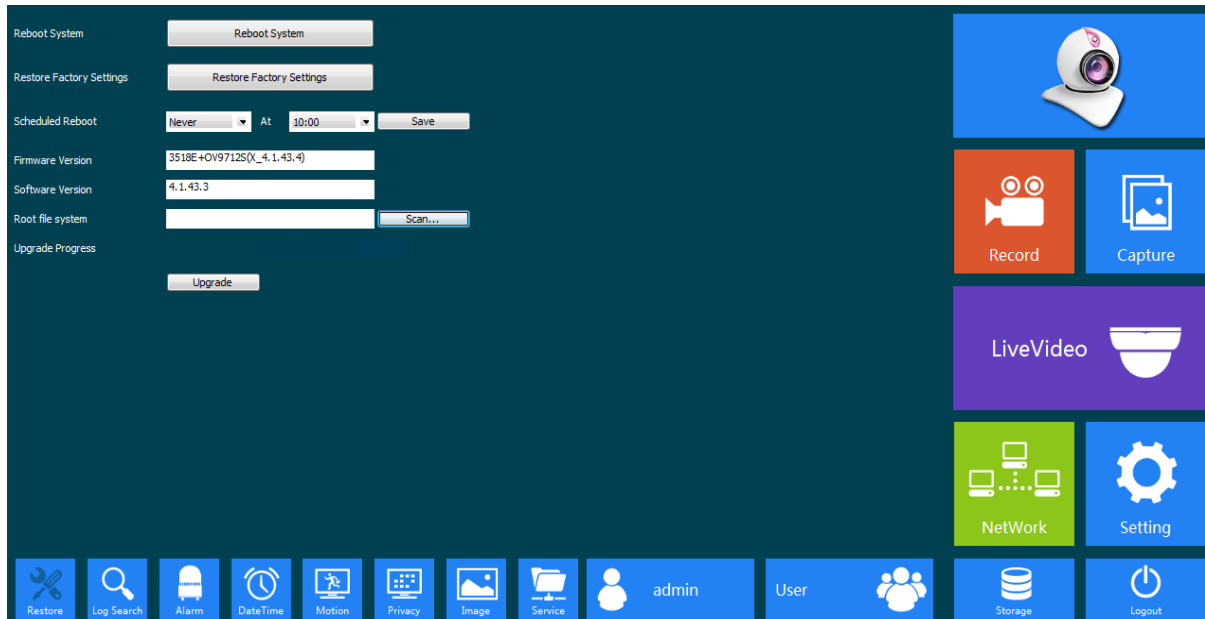


Figure3- 19 Restore

【 Reboot System 】 :Click “Reboot System”,it will prompt “System Reboot” Window as figure 3-20:

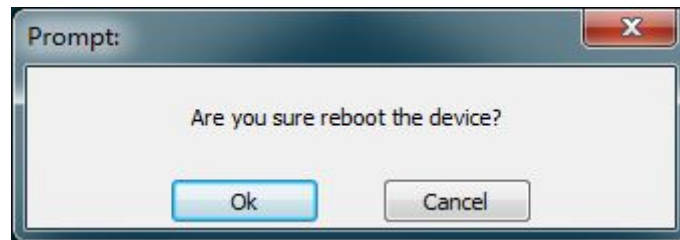


Figure 3-20 System Reboot

【 Restore Factory Settings 】 :Click “Restore Factory Settings”,it will prompt “ Restore configure ” Window as figure 3-21:

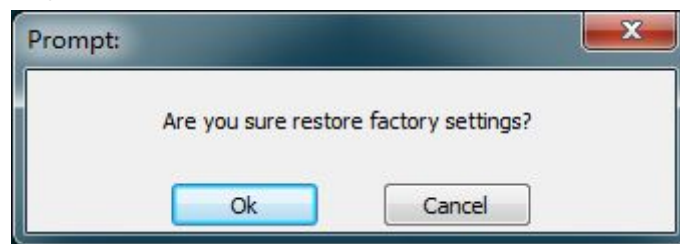


Figure 3-21 Restore configure

【 Scheduled Reboot 】 : Set the camera automatically restart time

You can view the firmware and software version information

To Upgrade Firmware,click 【 Scan 】 to browse,select the upgrade file and then click 【Upgrade】 to upgrade,in the upgrade process,there will be an upgrade progress bar shows the completion of the upgrade, when it finished, click 【OK】 to complete and save the setting.



Note: the device can not be power off when upgrading. And the firmware must be correct.

## 4 Frequently Asked Questions

### 4.1 Why can not access the camera by IE?

Answer: There maybe 4 reasons, Details are as follows:

a.The network unreasonable?

Solution: First you can connect network by PC, check the network cable if it is good. And check the network between the camera and the PC is good.

b.The IP address of the camera is occupied by other device or PC?

Solution: You can connect the camera with your PC directly, and modify the IP address or use the IP search tool.

c.The camera maybe in other network segment?

Solution: Check the IP address and net mask.

d.Unknown?

Solution: You can restore the camera to default configuration.

### 4.2 Why can not switch the data?

Answer: There maybe 3 reasons, Details are as follows:

a.Two-Switches. Whether the IP address is correct or not?

Solution: Check the connection between the camera and PC with the command “Ping IP Address”, which used in CMD.exe.

b.Three-Switches. Whether port and physical address bindings?

Solution: If the IP and MAC address is bind. It needs to conduct such Settings in the switch and add a new binding for the camera's IP address and MAC address .

c.Firewall?

Solution: Re-set the firewall.

### 4.3 Why can not access the camera after update?

Answer: Clean browser cache.

Steps: open IE, click “Tools” and select “Internet Options”, then you can see “Temporary Internet files” and click “Delete Files”, it will prompt a dialog you need to check “Delete all offline content” and click “OK”.

Also you can click “Start” and select “Run” then enter “cmd”, enter “arp -d” in “Command Prompt” interface. Re-access the camera.

#### **4.4 Why can not show the whole interface?**

Answer:Close some options of IE.

Steps:Open IE,click"View"and select "Toolbar",close the "Favorites bar","Status bar"and "Command bar".