

Danale大拿

User manual For Android



1 Installation

Use mobile phone to visit IP address: <http://www.danale.com>.


Download and install Danale software. You will see a quick icon

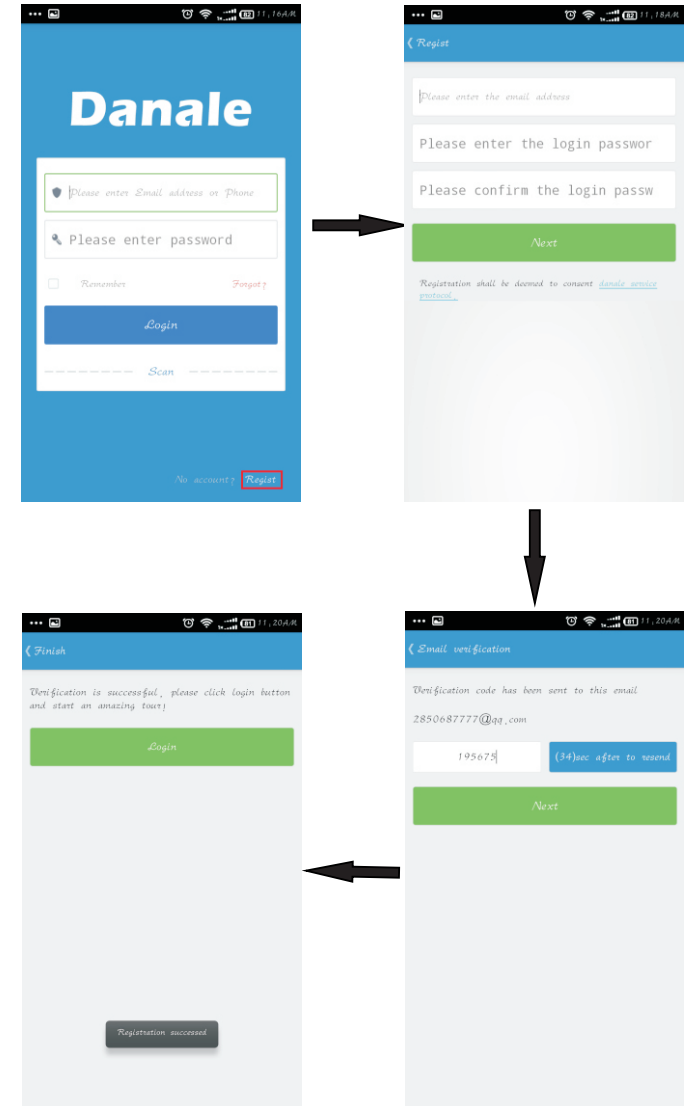


, if installed software succeed.

2 Register

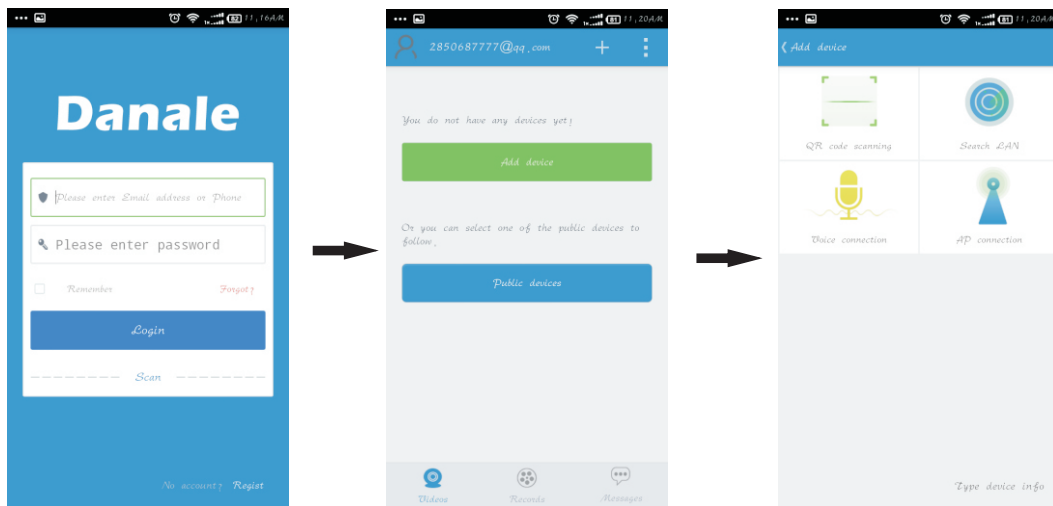
Procedures below:

1. Double click icon to boot  Danale android mobile client.
2. Click **register**.
3. Please input email address and password.
4. Click **Next** icon and input certification information.



3 Add device

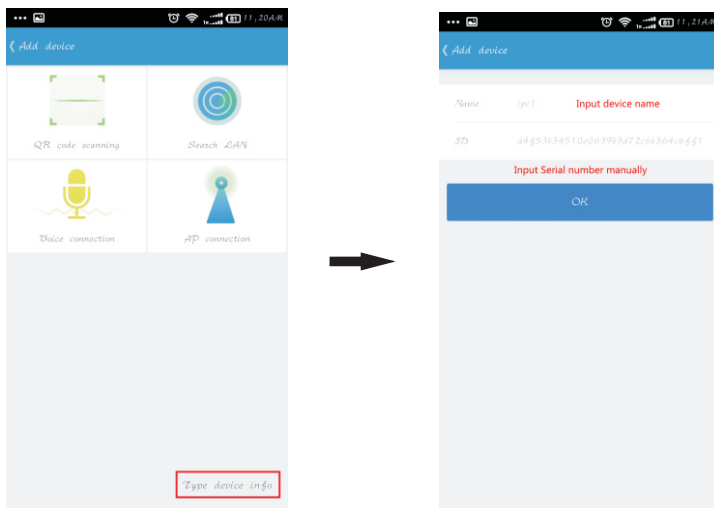
1. Login Danale software.
2. There are two ways of adding device, including QR code scanning and Manual add.



3.1 Manually input serial number

Procedures below:

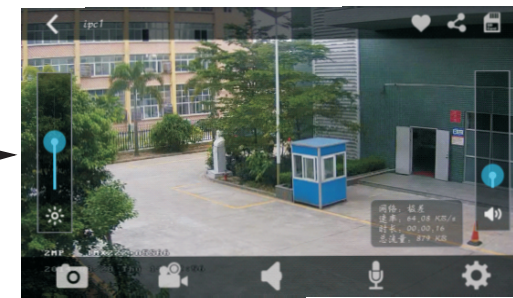
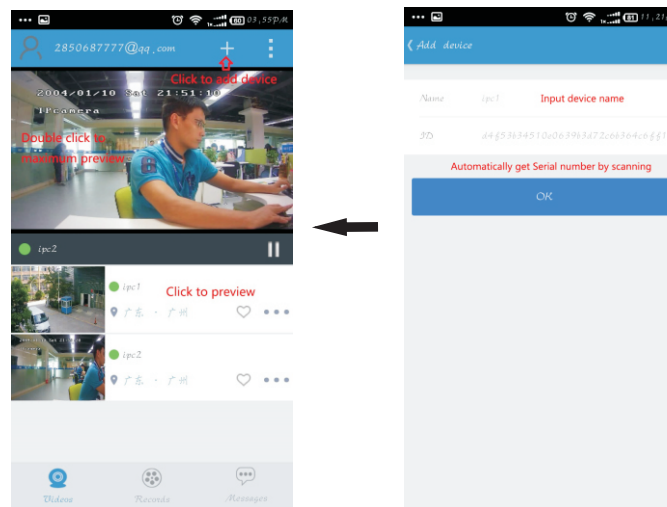
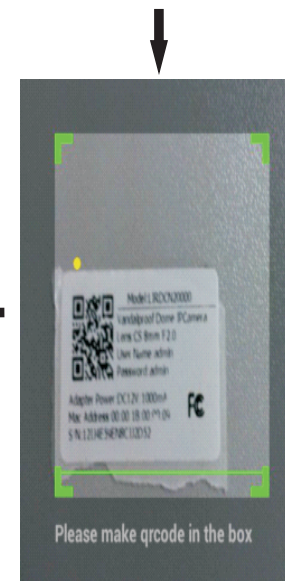
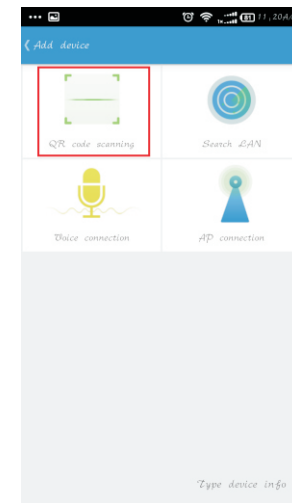
1. Click **Add Device**.
2. Click **type device info**.
3. Input device name and serial number.



3.2 Scan QR code to get QR code

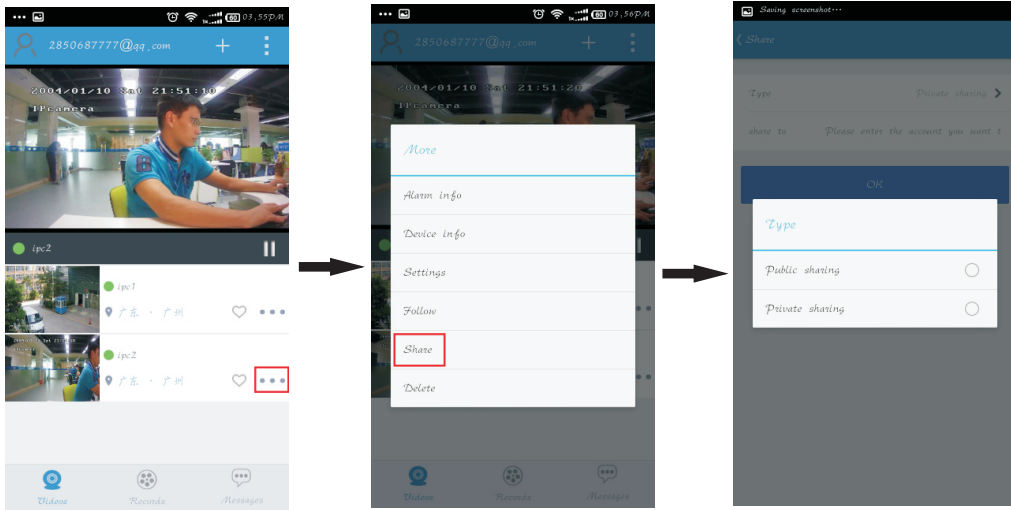
Procedures below:

1. Click **QR code scan**.
2. Scan QR code.
3. Input **device name**.
4. Preview camera.



4 Share device

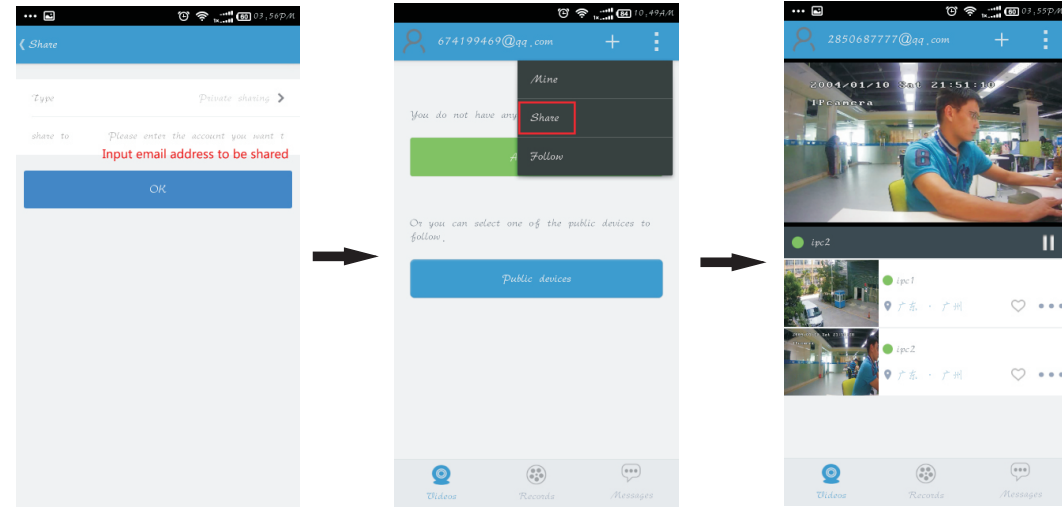
Please click red part, and it will pop-up two ways of sharing, including public share and private share.



4.2 Private share

Procedures below:

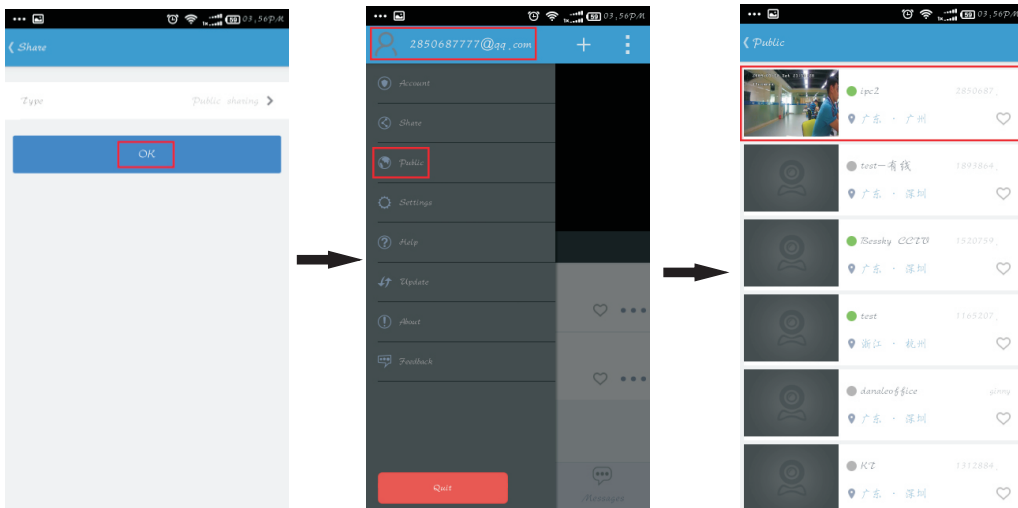
1. Input email to be shared.
2. Click **Share** icon.



4.1 Public share

Procedures below:

1. Click **OK** icon.
2. Click **Public** icon.



5 Function

