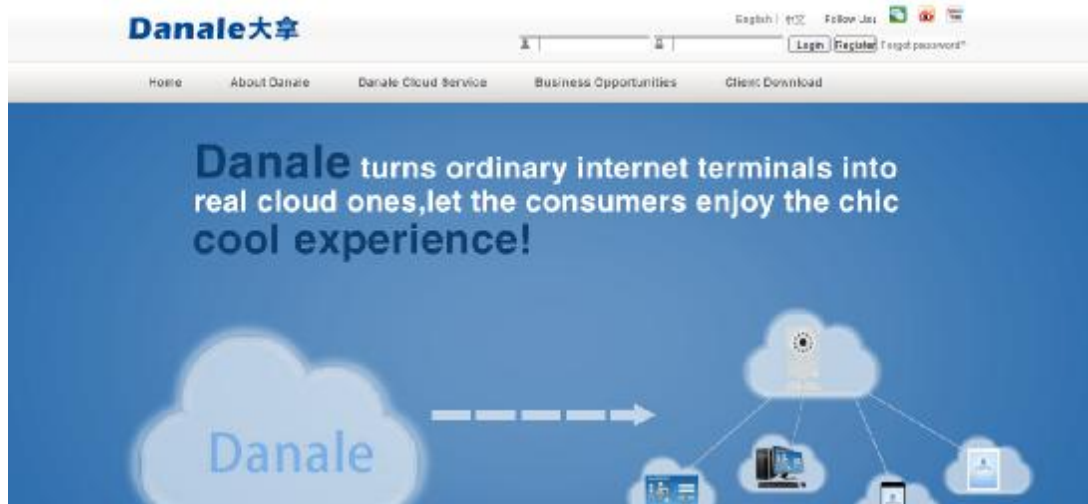


## P2P connection from Web page

Open IE browser, input <http://www.danale.com> in the address bar, you will see the following picture:



Please sign in first, then input your User ID and Password to login, you can Check the device, as is shown in the following picture:



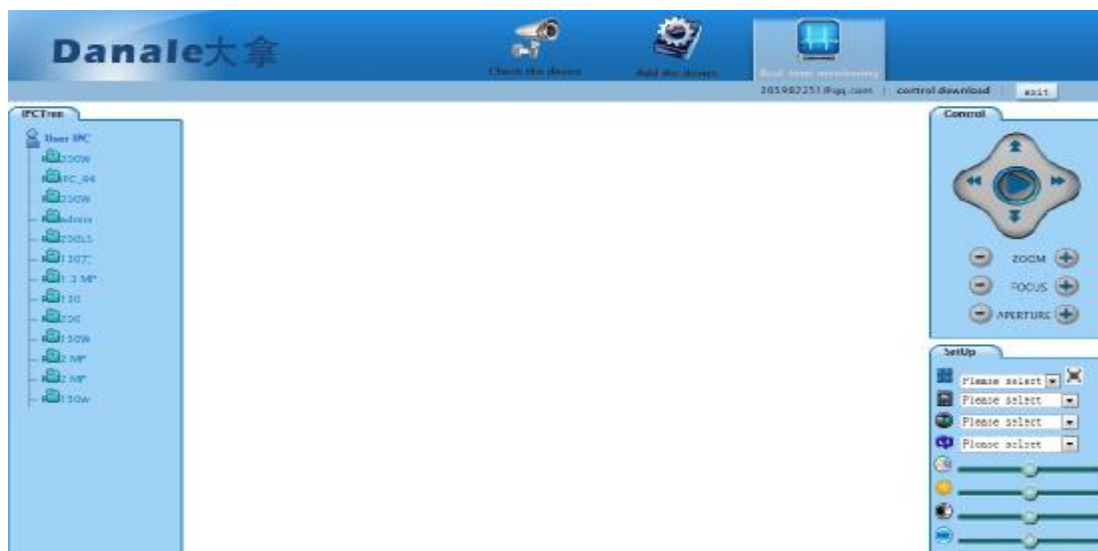
Here you can select Check the device, Add the device and Real-time monitoring.

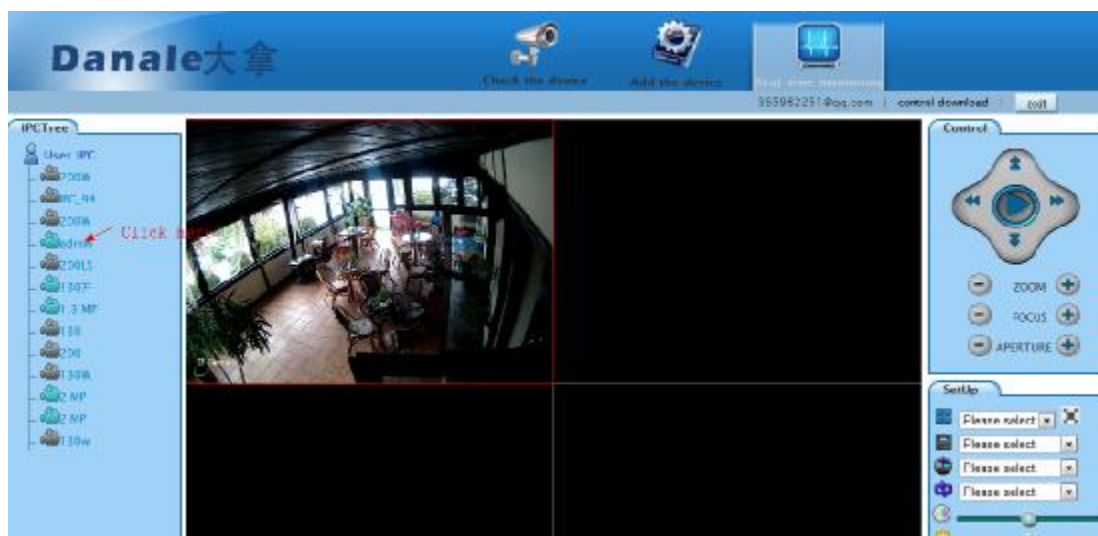
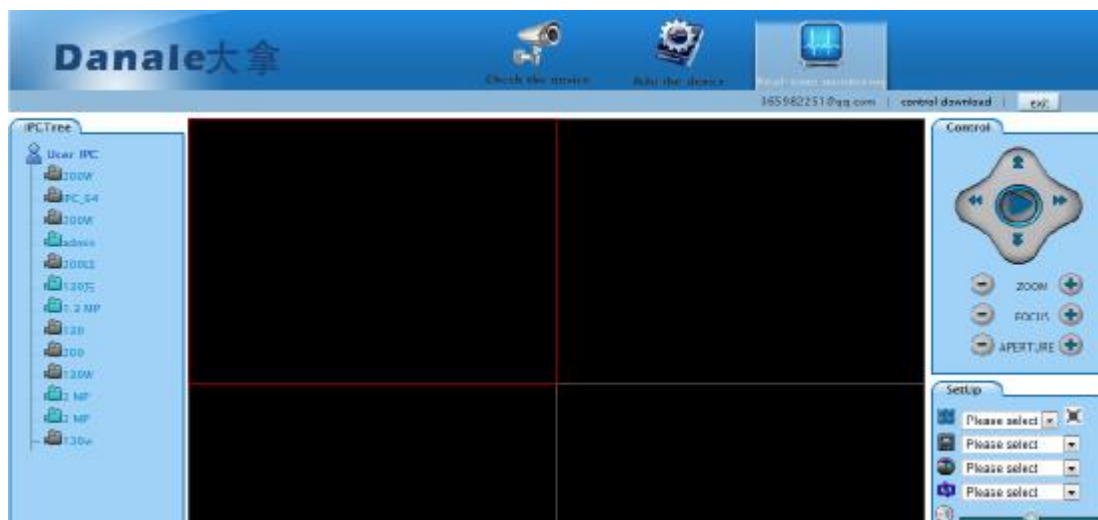
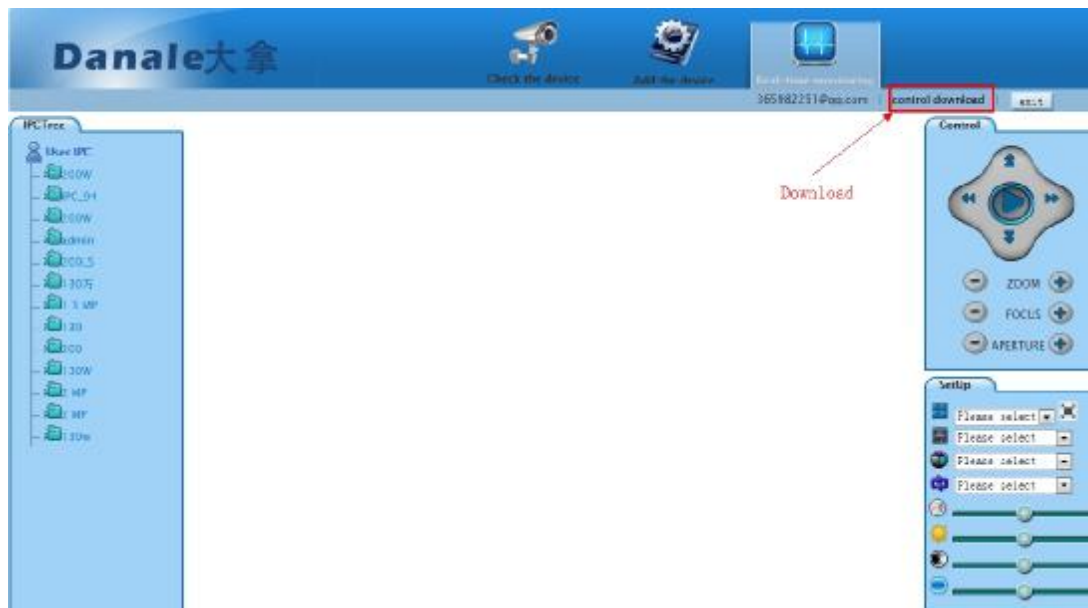
Of course, you must add the device first, click Add the device, then you will see the following picture:



Then edit the device information on the right, edit the DeviceName, DeviceID is the serialnum of the device, and set the DevicePassword , then click Submit to finish .

Click Real-time monitoring to view the images, here please download and install the controls first, then you will see the following picture:





Click the device in the device list on the left to play. You can set the parameters to control the devices on the right.